

TOYO PRE-INSULATED PAIR COIL - 20m ROLL (410A Rated)

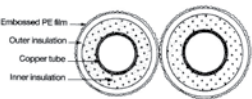


STOCK NO.	PART NO.	DESCRIPTION		TUBE WALL THICKNESS		SWP			PRICE \$ excl. GST
		IMPERIAL	METRIC	METRIC		kPA			
AC0002	TD-2320-8	1/4 x 3/8	6.35 x 9.53	0.8	0.8	9835	x	6329	POA
AC0003	TD-2420	1/4 x 1/2	6.35 x 12.70	0.8	0.8	9835	x	4665	POA
AC0004	TD-2520	1/4 x 5/8	6.35 x 15.88	0.8	1.0	9835	x	4664	POA
AC0004A	TD-3420	3/8 x 1/2	9.53 x 12.7	0.8	0.8	6329	x	4665	POA
AC0005	TD-3520	3/8 x 5/8	9.53 x 15.88	0.8	1.0	6329	x	4664	POA
AC0006	TD-3620Z	3/8 x 3/4	9.53 x 19.05	0.8	1.2	6329	x	4665	POA
AC0007	TD-4620Z	1/2 x 3/4	12.7 x 19.05	0.8	1.2	4665	x	4665	POA



- The Copper Tube is soft annealed and is to JIS H3300 C1220T Standard. R410a compatible.
- Values of SWP are derived from the formula from ANSI B31 Standard Code for Pressure Piping.

Compliance with JIS H3300 C1220T and JIS A9511 P2
Compliance with the standard relating to the Freezing
Safety Regulations of Japan (excluding TD-2320-7)



Toyo Tube Insulation is of double-layered structure made up of cross-linked, foamed, closed cell polyethylene. The covering is of embossed polyethylene, free of defects, and does not crease when bent. Seamless extrusion is used to ensure close contact with the copper tube, and to enhance the dew-proofing properties. Heat resistance is up to 120° C. and the insulation is manufactured to JIS A9511 P2 Standard.

REALCOLD PRE-INSULATED PAIR COIL - 20m ROLL (410A Rated)

STOCK NO.	PART NO.	DESCRIPTION		TUBE WALL THICKNESS		PRICE \$ excl. GST
		IMPERIAL	METRIC	METRIC		
AC0056	OSP2320	1/4 x 3/8	6.35 x 9.53	0.8	0.8	POA
AC0057	OSP2420	1/4 x 1/2	6.35 x 12.70	0.8	0.8	POA
AC0058	OSP2520	1/4 x 5/8	6.35 x 15.88	0.8	1.0	POA
AC0059	OSP3520	3/8 x 5/8	9.53 x 15.88	0.8	1.0	POA
AC0060	OSP3620-12	3/8 x 3/4	9.53 x 19.05	0.8	1.2	POA
AC0061	OSP4620-12	1/2 x 3/4	12.7 x 19.05	0.8	1.2	POA

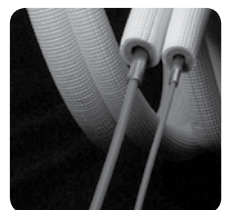


- Please contact Realcold for further information on Realcold pair coil.

INTERNAL PIPE BENDERS - FOR PAIR COIL



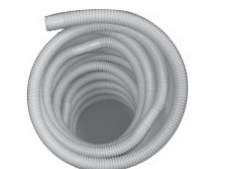
STOCK NO.	PART NO.	DESCRIPTION	PRICE \$ excl. GST
AC0121	TBT-325	3/8" Internal Pipe Bender - 25m	95.00
AC0122	TBT-425	1/2" Internal Pipe Bender - 25m	115.00
AC0123	TBT-525	5/8" Internal Pipe Bender - 25m	175.00
AC0124	TBT610	3/4" Internal Pipe Bender - 10m	135.00



- Made to be cut to shorter lengths providing several benders. Shorter lengths available from some branches.

TOYO DRAINAGE HOSE

STOCK NO.	PART NO.	DESCRIPTION	PRICE \$ excl. GST
AC0749	DRH-14N	Drain Hose 14mm x 50m roll	64.00
AC0748	DRH-16N	Drain Hose 16mm x 50m roll	75.50
AC0746	DRS	Y-Piece - suits 14 & 16mm drain hose	6.75
AC0730	IDH-20	Insulated Drain Hose 20mm x 20m roll	198.00
AC0732	IDH-20JN	Joint for 20mm drain Hose	2.80
AC0734	IDH-20C	Cuff for 20mm drain Hose	2.80



AC0746



AC0732

- Toyo DRH drain hose is made of Linear Low Density Polyethylene – light weight, high mechanical strength and better UV resistance (5000hr durable in weather testing)
- Toyo IDH Insulated drain hose is made of Linear Low Density Polyethylene covered with a high performance insulation offering protection against condensation in high humidity environments.

SOFT DRAWN COPPER TUBE

STOCK NO.		R410A	WALL	PRICE \$ excl. GST
H0001	1/4" (6.35 mm) 30 m roll	√	0.81 mm	POA
H0009	3/8" (9.53 mm) 18 m roll	√	0.81 mm	POA
H0014	1/2" (12.70 mm) 18 m roll	√	0.81 mm	POA
H0018	5/8" (15.88 mm) 18 m roll		0.91 mm	POA
H0032	5/8" (15.88 mm) 18 m roll	√	1.02 mm	POA
H0020	3/4" (19.05 mm) 18 m roll		0.91 mm	POA
H0034	3/4" (19.05 mm) 18 m roll	√	1.22 mm	POA
H0022	7/8" (22.22 mm) 18 m roll		0.91 mm	POA



■ Refrigeration grade dehydrated and nitrogen purged, copper tube. Manufactured in accordance with AS1571.

SOFT DRAWN COPPER TUBE - REALCOLD & GMG

STOCK NO.		R410A	WALL	PRICE \$ excl. GST
H0041	1/4" (6.35 mm) 30m roll	√	0.81 mm	POA
H0049	3/8" (9.53 mm) 18m roll	√	0.81 mm	POA
H0054	1/2" (12.70 mm) 18m roll	√	0.81 mm	POA
H0072	5/8" (15.88 mm) 18m roll	√	1.02 mm	POA
H0074	3/4" (19.05 mm) 18m roll	√	1.22 mm	POA
H0076	7/8" (2.22 mm) 18m roll	√	1.60 mm	POA



■ Refrigeration grade dehydrated and nitrogen purged, copper tube. Manufactured in accordance with AS1571.

CAPILLARY SERVICE PACKS

STOCK NO.	DESCRIPTION	PRICE \$ excl. GST
G0381	SP-1 .026" ID (0.66 mm) in 3.660 metre coils	24.50
G0382	SP-2 .0315" ID (0.80 mm) in 3.660 metre coils	24.50
G0383	SP-3 .0355" ID (0.90 mm) in 3.660 metre coils	24.50
G0384	SP-4 .0435" ID (1.10 mm) in 4.270 metre coils	24.50
G0384A	SP-4.5 .043" ID (1.20 mm) in 4.270 metre coils	24.50
G0385	SP-5 .051" ID (1.30 mm) in 4.270 metre coils	24.50
G0386	SP-6 .055" ID (1.40 mm) in 3.660 metre coils	24.50
G0386A	SP-6.5 .059" ID (1.50 mm) in 3.660 metre coils	24.50
G0387	SP-7 .064" ID (1.62 mm) in 3.050 metre coils	24.50
G0388	SP-8 .070" ID (1.78 mm) in 3.660 metre coils	24.50
G0389	SP-9 .075" ID (1.90 mm) in 2.750 metre coils	24.50
G0390	SP-10 .080" ID (2.04 mm) in 3.050 metre coils	24.50
G0391	SP-11 .088" ID (2.24 mm) in 3.660 metre coils	24.50



■ These service packs offer a complete selection from large commercial air conditioning units to the smallest domestic refrigeration requirements.

LIQUID LINE DRIERS COPPER SPUN

STOCK NO.	PRODUCT NUMBER	DESCRIPTION	PRICE \$ excl. GST
H0245	D0010	10 g Domestic Copper Spun Drier	3.95
H0250	D80015	15 g Domestic Copper Spun Drier	7.40
H0253	D80025	20 g Domestic Copper Spun Drier	9.40



HARD DRAWN COPPER TUBE (Refrigeration Grade)

STOCK NO.	LENGTH (M)	NOMINAL OD		WALL SIZE mm	410A	PRICE \$ excl. GST
		Inches	mm			
H2000K	6	1/4	6.4	0.81	√	POA
H2003K	6	3/8	9.5	0.81	√	POA
H2006K	6	1/2	12.7	0.81	√	POA
H2009K	6	5/8	15.9	0.81		POA
H2012K	6	5/8	15.9	1.02	√	POA
H2015K	6	3/4	19.1	0.89	√	POA
H2018K	6	3/4	19.1	1.02		POA
H2021K	6	3/4	19.1	1.14	√	POA
H2024K	6	7/8	22.2	0.91		POA
H2027K	6	7/8	22.2	1.22		POA
H2030K	6	7/8	22.2	1.40	√	POA
H2033K	6	7/8	22.2	1.63	√	POA
H2036K	6	1	25.4	0.91		POA
H2039K	6	1	25.4	1.22		POA
H2042K	6	1	25.4	1.63	√	POA
H2045K	6	1-1/8	28.6	0.91		POA
H2048K	6	1-1/8	28.6	1.22		POA
H2051K	6	1-1/8	28.6	1.63		POA
H2054K	6	1-1/8	28.6	1.83	√	POA
H2057K	6	1-1/4	31.8	0.91		POA
H2060K	6	1-1/4	31.8	1.22		POA
H2063K	6	1-1/4	31.8	2.03	√	POA
H2066K	6	1-3/8	34.9	0.91		POA
H2069K	6	1-3/8	34.9	1.22		POA
H2072K	6	1-3/8	34.9	2.03	√	POA
H2075K	6	1-1/2	38.1	1.22		POA
H2078K	6	1-5/8	41.3	0.91		POA
H2081K	6	1-5/8	41.3	1.22		POA
H2084K	6	1-5/8	41.3	2.41	√	POA
H2087K	6	2	50.8	1.22		POA
H2090K	6	2-1/8	54	0.91		POA
H2093K	6	2-1/8	54	1.22		POA
H2096K	6	2-1/8	54	1.63		POA
H2099K	6	2-5/8	66.7	1.22		POA
H2102K	6	2-5/8	66.7	1.63		POA
H2105K	6	2-5/8	66.7	2.03		POA
H2108K	6	3	76.2	1.63		POA
H2111K	6	4	101.6	1.63		POA



- Refrigeration grade dehydrated and nitrogen purged, copper tube. Manufactured in accordance with AS1571.
- Above listed copper tube is Australian made.

90° LONG RADIUS ELBOW

STOCK NO.	SIZE (Inches)	410A	PRICE \$ excl. GST
J8000	1/4	√	1.95
J8003	3/8	√	2.05
J8005	1/2	√	2.10
J8008	5/8	√	2.65
J8010	3/4	√	3.50
J8013	7/8	√	5.15
J8015	1	√	7.20
J8018	1-1/8		7.45
J8019	1-1/8	√	13.95
J8026	1-1/4		16.00
J8026A	1-1/4	√	17.30

STOCK NO.	SIZE (Inches)	410A	PRICE \$ excl. GST
J8020	1 3/8		12.85
J8020A	1 3/8	√	23.10
J8021	1-1/2		25.50
J8023	1-5/8		19.30
J8023A	1-5/8	√	38.95
J8025	2		48.00
J8028	2-1/8		32.80
J8030	2-5/8		69.70
J8031	3		131.30
J8033	3-1/8		135.00
J8032	4		243.20



90° SHORT RADIUS ELBOW

STOCK NO.	SIZE (Inches)	410A	PRICE \$ excl. GST
J7003	3/8	√	1.60
J7005	1/2	√	1.65
J7008	5/8	√	2.10
J7010	3/4	√	3.55
J7013	7/8	√	4.60
J7015	1	√	5.95
J7018	1-1/8		5.95

STOCK NO.	SIZE (Inches)	410A	PRICE \$ excl. GST
J7020	1-1/4		13.55
J7023	1-3/8		9.65
J7025	1-1/2		18.80
J7028	1-5/8		12.95
J7030	2-1/8		25.40
J7033	2-5/8		69.90
J7035	3		78.50



90° MALE / FEMALE ELBOW

STOCK NO.	SIZE (Inches)	410A	PRICE \$ excl. GST
J8316	1/2	√	3.10
J8319	5/8	√	3.35
J8300	3/4	√	5.50
J8301	7/8	√	6.50
J8302	1	√	10.75

STOCK NO.	SIZE (Inches)	410A	PRICE \$ excl. GST
J8303	1-1/8		10.75
J8306	1-3/8		17.50
J8308	1-5/8		24.60
J8310	2-1/8		51.95
J8313	2-5/8		107.90



45° COPPER ELBOW

STOCK NO.	SIZE (Inches)	410A	PRICE \$ excl. GST
J8036	1/2	√	4.70
J8035	5/8	√	4.90
J8038	3/4	√	5.20
J8040	7/8	√	8.35
J8043	1	√	11.80
J8045	1-1/8		12.00
J8046	1-1/8	√	12.00

STOCK NO.	SIZE (Inches)	410A	PRICE \$ excl. GST
J8047	1-1/4		22.85
J8048	1-3/8		10.75
J8049	1-3/8	√	26.35
J8050	1-5/8		16.05
J8051	1-5/8	√	39.15
J8053	2-1/8		26.45
J8055	2-5/8		52.80



COPPER TEES

STOCK NO.	SIZE (Inches)	410A	PRICE \$ excl. GST
J8085	1/4	√	1.90
J8088	3/8	√	1.95
J8090	1/2	√	2.50
J8093	5/8	√	3.65
J8095	3/4	√	4.55
J8098	7/8	√	7.35
J80100	1	√	13.95

STOCK NO.	SIZE (Inches)	410A	PRICE \$ excl. GST
J8103	1-1/8		13.95
J8104	1-1/8	√	27.50
J8105	1-3/8		19.95
J8110	1-5/8		27.05
J8113	2-1/8		49.50
J8115	2-5/8		82.50
J8117	3		196.70



COPPER REDUCING TEES

STOCK NO.	SIZE LINE (Inches)	BRANCH (Inches)	410A	PRICE \$ excl. GST
J8096	3/8	1/4	✓	2.40
J8089	1/2	1/4	✓	3.45
J8403	1/2	3/8	✓	3.45
J8401	5/8	3/8	✓	5.70
J8402	5/8	1/2	✓	5.70

STOCK NO.	SIZE LINE (Inches)	BRANCH (Inches)	410A	PRICE \$ excl. GST
J8407	3/4	3/8	✓	7.05
J8408	3/4	1/2	✓	7.05
J8097	7/8	1/2	✓	14.90
J8404	1	1/2	✓	15.50
J8412	1	3/4	✓	15.50



COPPER REDUCERS (COUPLING ID X ID)

STOCK NO.	SIZE OD (Inches)	SIZE OD (Inches)	410A	PRICE \$ excl. GST
J8170	3/8	1/4	✓	1.60
J8175	1/2	3/8	✓	1.75
J8178	5/8	3/8	✓	2.00
J8180	5/8	1/2	✓	2.00
J8183	3/4	3/8	✓	3.50
J8185	3/4	1/2	✓	3.50
J8186	3/4	5/8	✓	3.50
J8188	7/8	1/2	✓	3.80
J8190	7/8	5/8	✓	3.80
J8193	7/8	3/4	✓	3.80
J8194	1	3/4	✓	7.15
J8196	1	7/8		7.15
J8197	1-1/8	1/2		6.75
J8195	1-1/8	5/8		6.75
J8198	1-1/8	3/4		6.75
J8200	1-1/8	7/8		6.75
J8201	1-1/8	1		6.75

STOCK NO.	SIZE OD (Inches)	SIZE OD (Inches)	410A	PRICE \$ excl. GST
J8203	1-3/8	5/8		8.50
J8203A	1-3/8	3/4		8.50
J8205	1-3/8	7/8		8.50
J8208	1-3/8	1-1/8		8.50
J8210	1-5/8	7/8		11.00
J8209	1-5/8	1-1/8		11.00
J8215	1-5/8	1-3/8		11.00
J8218	2-1/8	1-1/8		18.70
J8220	2-1/8	1-3/8		18.70
J8223	2-1/8	1-5/8		18.70
J8225	2-5/8	1-3/8		26.40
J8228	2-5/8	1-5/8		26.40
J8230	2-5/8	2-1/8		24.40
J8231	3	2-1/8		63.80
J8221	3-1/8	2-1/8		65.00
J8233	3-1/8	2-5/8		75.00



COPPER REDUCERS (BUSH OD X ID)

STOCK NO.	SIZE OD (Inches)	SIZE ID (Inches)	410A	PRICE \$ excl. GST
J8181	1/2	3/8	✓	2.20
J8182	5/8	1/2	✓	2.40
J8191	3/4	5/8	✓	5.00
J8188A	7/8	1/2	✓	3.35
J8189	7/8	5/8	✓	3.35
J8192	1-1/8	5/8		5.70
J8192A	1-1/8	5/8	✓	7.60
J8198A	1-1/8	3/4		7.60
J8199	1-1/8	7/8		5.70
J8199A	1-1/8	7/8	✓	7.60
J8204	1-3/8	7/8		8.50
J8204A	1-3/8	7/8		11.35
J8207	1-3/8	1-1/8		8.50
J8206	1-3/8	1-1/8	✓	11.35

STOCK NO.	SIZE OD (Inches)	SIZE ID (Inches)	410A	PRICE \$ excl. GST
J8210A	1-5/8	7/8		13.35
J8212	1-5/8	1-1/8		13.35
J8216	1-5/8	1-3/8		13.35
J8217	1-5/8	1-3/8	✓	17.00
J8219	2-1/8	1-1/8		21.00
J8222	2-1/8	1-3/8		21.00
J8224	2-1/8	1-5/8		21.00
J8234	2-5/8	1-5/8		27.85
J8232	2-5/8	2-1/8		27.85
J8232A	3	2-1/8		80.00
J8232B	3	2-5/8		90.00
J8226	3-1/8	2-1/8		85.00
J8233B	3-1/8	2-5/8		95.00



COPPER COUPLINGS

STOCK NO.	SIZE (Inches)	410A	PRICE \$ excl. GST
J8119	1/4	✓	1.15
J8120	3/8	✓	1.15
J8123	1/2	✓	1.50
J8125	5/8	✓	1.90
J8128	3/4	✓	2.95
J8130	7/8	✓	2.95
J8131	1	✓	4.50
J8133	1-1/8		3.75
J8133A	1-1/8	✓	6.15

STOCK NO.	SIZE (Inches)	410A	PRICE \$ excl. GST
J8132	1-1/4		6.25
J8135	1-3/8		6.55
J8136	1-3/8	✓	15.15
J8138	1-5/8		8.30
J8138A	1-5/8	✓	17.70
J8140	2-1/8		18.35
J8143	2-5/8		27.30
J8144A	3		110.00
J8145	3-1/8		110.00



'P' TRAPS

STOCK NO.	SIZE (Inches)	410A	PRICE \$ excl. GST
J8260	5/8	✓	19.50
J8263	3/4	✓	26.30
J8265	7/8	✓	39.10
J8268	1-1/8		49.90

STOCK NO.	SIZE (Inches)	410A	PRICE \$ excl. GST
J8270	1-3/8		75.90
J8273	1-5/8		95.70
J8275	2-1/8		188.10



RETURN BENDS - 180°

STOCK NO.	SIZE	410A	PRICE \$ excl. GST
J8060	3/8	✓	8.50
J8063	1/2	✓	10.50
J8065	5/8		11.50

STOCK NO.	SIZE	410A	PRICE \$ excl. GST
J8068	3/4		25.00
J8070	7/8		20.00



Y PIECES

STOCK NO.	SIZE (Inches)	PRICE \$ excl. GST
J8422	1/2 x 3/8 x 3/8	26.00
J8418	5/8 x 5/8 x 5/8	35.00
J8417	5/8 x 1/2 x 1/2	35.00

STOCK NO.	SIZE (Inches)	PRICE \$ excl. GST
J8425	7/8 x 7/8 x 7/8	44.00
J8424	7/8 x 5/8 x 5/8	44.00
J8420	1-1/8 x 7/8 x 7/8	98.00



END CAPS

STOCK NO.	SIZE (Inches)	PRICE \$ excl. GST
J8147	1/2	3.30
J8148	5/8	2.30
J8150	3/4	2.90
J8153	7/8	3.20
J8154	1	7.20
J8155	1-1/8	7.20

STOCK NO.	SIZE (Inches)	PRICE \$ excl. GST
J8158	1-3/8	7.80
J8160	1-5/8	14.20
J8163	2-1/8	16.70
J8165	2-5/8	20.80
J8167	3	35.00
J8169	4	79.00



COPPER FLARE BONNETS

STOCK NO.	SIZE (Inches)	PRICE \$ excl. GST
J0790	1/4	0.80
J0792	3/8	0.95
J0793	1/2	1.05

STOCK NO.	SIZE (Inches)	PRICE \$ excl. GST
J0794	5/8	1.70
J0795	3/4	2.20



COPPER FLARE GASKETS

STOCK NO.	SIZE (Inches)	PRICE \$ excl. GST
J0810	1/4	0.60
J0812	3/8	1.35
J0813	1/2	1.45

STOCK NO.	SIZE (Inches)	PRICE \$ excl. GST
J0814	5/8	1.90
J0815	3/4	2.65



FLARE NUTS - SHORT BARREL

STOCK NO.	SIZE (Inches)	PRICE \$ excl. GST
J0428	5/16MF x 1/4	5.80
J0401	1/4	3.70
J0402	5/16	4.20
J0403	3/8	4.60
J0404	1/2	5.65
J0405	5/8	8.55
J0406	3/4	14.30



FLARE NUTS - LONG BARREL

STOCK NO.	SIZE (Inches)	PRICE \$ excl. GST
J0407	1/4	6.20
J0408	3/8	7.90
J0409	1/2	9.30
J0399	5/8	13.50



FLARE NUTS - FROSTPROOF

STOCK NO.	SIZE (Inches)	PRICE \$ excl. GST
J0410	1/4	6.45
J0411	5/16	7.20
J0412	3/8	7.70
J0413	1/2	9.30
J0414	5/8	16.10
J0415	3/4	21.80



REDUCING F/NUTS - FROSTPROOF

STOCK NO.	SIZE (Inches)	PRICE \$ excl. GST
J0421	3/8 x 1/4	10.80
J0422	1/2 x 3/8	18.45
J0423	5/8 x 1/2	26.90



FLARE SEAL CAPS

STOCK NO.	SIZE (Inches)	PRICE \$ excl. GST
J0770	1/4	3.55
J0772	3/8	8.55
J0773	1/2	12.05
J0774	5/8	21.95



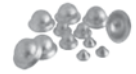
COPPER FLARE GASKETS

STOCK NO.	SIZE (Inches)	PRICE \$ excl. GST
J0810	1/4	0.60
J0812	3/8	1.35
J0813	1/2	1.45
J0814	5/8	1.90
J0815	3/4	2.65



COPPER FLARE BONNETS

STOCK NO.	SIZE (Inches)	PRICE \$ excl. GST
J0790	1/4	0.80
J0792	3/8	0.95
J0793	1/2	1.05
J0794	5/8	1.70
J0795	3/4	2.20



MALE FLARE UNION

STOCK NO.	SIZE (Inches)	PRICE \$ excl. GST
J0431	1/4 x 1/4	6.15
J0432**	5/16 x 5/16	8.00
J0433	3/8 x 3/8	12.05
J0434	1/2 x 1/2	12.95
J0435	5/8 x 5/8	24.50
J0436	3/4 x 3/4	30.45



MALE FLARE REDUCING UNIONS

STOCK NO.	SIZE (Inches)	PRICE \$ excl. GST
J0452	3/8 x 1/4	14.05
J0454	1/2 x 1/4	23.55
J0456	1/2 x 3/8	23.55
J0458	5/8 x 1/4	26.40
J0459	5/8 x 3/8	32.75
J0460	5/8 x 1/2	29.85
J0464	3/4 x 1/2	42.25
J0466	3/4 x 5/8	50.30



FEMALE FLARE SWIVEL UNIONS

STOCK NO.	SIZE (Inches)	PRICE \$ excl. GST
J0541	1/4	14.00
J0543	3/8	14.10
J0544	1/2	17.45
J0545	5/8	26.55



FEMALE FLARE CONNECTORS

STOCK NO.	SIZE (Inches)	PRICE \$ excl. GST
J0551	1/4	18.45
J0553	3/8	23.25
J0554	1/2	35.35



**5/16 Flare fitting as marked are 410A specific.

MALE TO F/FLARE REDUCING UNION

STOCK NO.	SIZE (Inches)		PRICE \$ excl. GST
	MF	FF	
J0476**	5/16	1/4	16.95
J0472	1/4	3/8	18.45
J0474	1/4	1/2	22.30
J0486	3/8	1/4	13.85
J0475	3/8	1/2	20.10
J0479	1/2	3/8	19.45
J0488	1/2	5/8	28.40
J0491	5/8	1/2	28.60
J0493	5/8	3/4	60.50
J0496	3/4	1/2	66.00



MALE FLARE - MBSP UNIONS

STOCK NO.	SIZE (Inches)		PRICE \$ excl. GST
	MF	FF	
J0501	1/4	1/8	6.95
J0502	1/4	1/4	9.35
J0504	1/4	3/8	12.20
J0519	1/4	1/2	18.95
J0505	1/4	1/4	22.50
J0507	3/8	1/8	14.20
J0508	3/8	1/4	11.20
J0510	3/8	3/8	13.70
J0511	3/8	1/2	17.00
J0515	1/2	1/4	16.75
J0517	1/2	3/8	12.20
J0518	1/2	1/2	14.65
J0520	1/2	3/4	35.15
J0523	5/8	3/8	39.00
J0524	5/8	1/2	23.20
J0525	5/8	3/4	29.65
J0530	3/4	1/2	28.20
J0531	3/4	3/4	28.50



MALE FLARE - MBSP SCHRADER

STOCK NO.	SIZE (Inches)		PRICE \$ excl. GST
	MF	MBSP	
J0900	1/4	1/8	7.20
J0901	1/4	1/4	7.20
J0903**	5/16	1/4	9.95



MALE FLARE - MNPT SCHRADER

STOCK NO.	SIZE (Inches)		PRICE \$ excl. GST
	MF	MNPT	
T0320	1/4	1/8	7.90
T0326	1/4	1/4	7.90



MALE FLARE - FBSP UNIONS

STOCK NO.	SIZE (Inches)		PRICE \$ excl. GST
	MF	FBSP	
J0536	1/4	1/8	12.05
J0537	1/4	1/4	12.40
J0538	1/4	3/8	17.50
J0535	3/8	1/2	39.00
J0535A	1/2	1/2	39.00



MALE FLARE - I.D. SOLDER

STOCK NO.	SIZE (Inches)		PRICE \$ excl. GST
	MF	I.D.	
J0758	1/4	3/8	8.45
J0764	3/8	3/8	7.90
J0626	3/8	1/2	14.45
J0627	1/2	1/2	12.55
J0762	5/8	5/8	16.00
J0760	3/4	3/4	25.40



MALE PIPE UNIONS

STOCK NO.	SIZE (Inches)		PRICE \$ excl. GST
	MBSP	I.D.	
J0820	1/4"	1/4"	12.80
J0822	3/8"	3/8"	13.60



CYLINDER ADAPTORS & SPARES

STOCK NO.	SIZE (Inches)		PRICE \$ excl. GST
	MF	FBSP	
J0539	1/4	3/4	15.00
J0540	3/8	3/4	18.80
J0540A	1/2	3/4	29.00
ZJ0539A**	5/16	3/4	23.00
J0548	Cylinder Cap 3/4" FBSP		19.50
J0534	Fibre Washer to suit Cyl. Adap		1.65



ACME ADAPTOR

STOCK NO.	SIZE (Inches)	PRICE \$ excl. GST
J0742	1/2 MACME to 1/4 FF	19.80
J0743	1/2 FACME to 1/4 MF	20.50



SCHRADER R410A ADAPTORS

STOCK NO.	SIZE (Inches)		PRICE \$ excl. GST
	MF	FF	
J0616**	1/4 Schr	5/16	26.15
J0616A**	5/16 Schr	1/4	31.00



**5/16 Flare fitting as marked are 410A specific.

DOUBLE MALE FLARE ELBOWS

STOCK NO.	SIZE (Inches)	PRICE \$ excl. GST
J0561	1/4	18.10
J0563	3/8	25.80
J0564	1/2"	33.80
J0565	5/8	48.00
J0566	3/4	88.00



MALE FLARE - FEMALE FLARE ELBOWS

STOCK NO.	SIZE (Inches)		PRICE \$ excl. GST
	MF	FF	
J0606	1/4	1/4	31.40
J0608	3/8	3/8	41.50
J0609	5/8	5/8	82.50



MALE FLARE - MALE BSP ELBOWS

STOCK NO.	SIZE (Inches)		PRICE \$ excl. GST
	MF	MBSP	
J0590	1/4	1/8	25.50
J0591	1/4	1/4	28.80
J0592	1/4	3/8	35.50
J0594	3/8	1/4	34.20
J0595	3/8	3/8	37.00
J0596	3/8	1/2	39.70
J0599	1/2	3/8	57.20
J0600	1/2	1/2	57.20
J0601	5/8	1/2	58.90



MALE FLARE TEES

STOCK NO.	SIZE (Inches)	PRICE \$ excl. GST
J0610	1/4	19.70
J0612	3/8	23.90
J0613	1/2	31.50
J0614	5/8	55.50
J0615	3/4	98.00



MALE FLARE - MALE BSP TEES

STOCK NO.	SIZE (Inches)	PRICE \$ excl. GST
J0617	1/4 MF x 1/4 MF x 1/8 MBSP	34.50
J0618	1/4 MF x 1/4 MF x 1/4 MBSP	42.70



FEMALE FLARE - M/FLARE TEES

STOCK NO.	SIZE (Inches)	PRICE \$ excl. GST
J0621	1/4 MF x 1/4 MF x 1/4 FF	50.40
J0628	1/4 MF x 1/4 MF x 1/4 FF (Swivel)	50.40
J0620**	5/16 SCHR x 5/16 FSAE	45.20



SCHRADER VALVES TEES

STOCK NO.	SIZE (Inches)	PRICE \$ excl. GST
J0622	1/4Schr x 1/4Schr x 1/8 MNPT	38.50
J0623	1/4Schr x 1/4Schr x FF Depressor	43.70
J0623A	1/4Schr x 1/4Schr x 1/4 FF	42.50
J0625	1/4Schr x 1/4Schr x 1/4 FF Swivel	40.00
J0620**	5/16 Schr x 5/16 Schr FF	45.20



MALE FLARE SEAL PLUGS

STOCK NO.	SIZE (Inches)	PRICE \$ excl. GST
J0690	1/4	6.25
J0691**	5/16	7.15
J0692	3/8	7.70
J0693	1/2	8.85
J0694	5/8	16.55
J0695	3/4	21.05



PIPE PLUGS MBSP

STOCK NO.	SIZE (Inches)	PRICE \$ excl. GST
J0730	1/8	6.25
J0731	1/4	9.35
J0732	3/8	12.20
J0733	1/2	17.25



PIPE BUSHINGS

STOCK NO.	SIZE (Inches)		PRICE \$ excl. GST
	MBSP	FBSP	
J0741	1/4	1/8	11.30
J0752	3/8	1/4	17.90
J0754	1/2	3/8	18.10
J0756	3/4	1/2	23.00



VALVE CAPS

STOCK NO.	SIZE (mm)	PRICE \$ excl. GST
J0720	20mm Cap Plastic Rotalock	2.35
J0721	22mm Cap Plastic Rotalock	3.15
J0722	24mm Cap Plastic Rotalock	3.85
J0701	Brass Cap 3/8 & 1/2 Service	34.35
J0702	Brass Cap 5/8 & 3/4 Service	38.45



**5/16 Flare fitting as marked are 410A specific.

SCHRADER ACCESS VALVES

STOCK NO.	DESCRIPTION	PRICE \$ excl. GST
T0324	Schrader Valve 1/4"MF with 50 mm 1/4" OD copper tail	8.50
T0325	Schrader Valve 1/4"MF with 50mm 3/16" OD copper tail	8.50
T0234A	Schrader Valve 5/16"MF with 50 mm 1/4" OD copper tail (R410A)	9.00
T0358	Schrader Quick Seal Cap 1/4" Flare	2.80
T0358A	Schrader Quick Seal Cap 5/16" Flare (R410A)	3.20
T0345	Schrader Core - Standard	2.95
T0346	Schrader Core - R410A	2.95



■ Refer to fittings section for complete range of schrader valves including schrader tee's.

SUPCO BULLET PIERCING VALVES

STOCK NO.	DESCRIPTION	PRICE \$ excl. GST
T0030	Bullet Valve BPV21	19.50
T0031	Bullet Valve BPV31	18.50



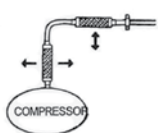
VIBRATION ELIMINATORS

Designed for installation in air conditioning and refrigeration piping to minimise transmission of vibration from the compressor or other parts of the system.

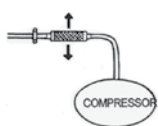
STOCK NO.	ODS	LAYING LENGTH	PRICE \$ excl. GST
F0475	3/8"	210 mm	51.25
F0476	1/2"	228 mm	57.40
F0477	5/8"	247 mm	59.45
F0478	3/4"	254mm	46.00
F0479	7/8"	292 mm	79.95
F0481	1-1/8"	330 mm	107.65
F0482	1-3/8"	374 mm	152.75
F0483	1-5/8"	432 mm	218.35
F0484	2-1/8"	508 mm	366.95
F0485	2-5/8"	609 mm	826.15
F0486	3-1/8"	686 mm	1,089.60



Installation Hints



Install the Vibration eliminator as close to the compressor as possible, and at right angles to the vibration motion. Anchor the refrigerant piping at the end of the unit furthest away from the vibration source. Allow sufficient space for the unit so that it will not be subject to static compression or tension after brazing it into place. Units should be installed in a straight line; they are not intended to compensate for offset piping.



If the unit is installed in an area where condensate can accumulate on it, cover the unit with a waterproof barrier to prevent moisture from freezing under the braid and ferrules, causing the unit to rupture. Care should be taken when making the sweat connections – direct the torch flame away from the braid and clean excess flux from the unit. For situations of severe vibration, install two units in series at right angles to one another.

MAXFLEX TUBE INSULATION



Maxflex expanded closed cell structure provides a high insulation factor combined with a strong vapour barrier and a high resistance to ozone and ultraviolet light. This combination provides long term prevention of condensation or frost formation on refrigeration piping and chilled water lines. Maxflex is also self extinguishing in nature. Tested in Accordance with AS/ANZS 1530.30.1999

10mm WALL PIPE INSULATION

STOCK NO.	ID (Inches)	ID (mm)	LGTHS PER CARTON	PRICE PER 2M LENGTH excl. GST
N2006FR	1/4	6	132	3.55
N2010FR	3/8	10	110	3.75
N2013FR	1/2	13	84	4.90
N2016FR	5/8	16	70	5.65
N2019FR	3/4	19	60	5.90
N2022FR	7/8	22	54	6.35

STOCK NO.	ID (Inches)	ID (mm)	LGTHS PER CARTON	PRICE PER 2M LENGTH excl. GST
N2025FR	1	25	44	6.75
N2028FR	1-1/8	28	36	7.05
N2032FR	1-1/4	32	34	7.55
N2035FR	1-3/8	35	32	7.75
N2042FR	1-5/8	42	28	10.70
N2054FR	2-1/8	54	18	13.05

13mm CELL PIPE INSULATION

STOCK NO.	ID (Inches)	ID (mm)	LGTHS PER CARTON	PRICE PER 2M LENGTH excl. GST
N2106FR	1/4	6	80	4.30
N2110FR	3/8	10	70	4.75
N2113FR	1/2	13	60	6.40
N2116FR	5/8	16	50	7.75
N2119FR	3/4	19	40	8.45
N2122FR	7/8	22	32	9.45
N2125FR	1	25	30	10.30
N2128FR	1-1/8	28	28	11.15

STOCK NO.	ID (Inches)	ID (mm)	LGTHS PER CARTON	PRICE PER 2M LENGTH excl. GST
N2132FR	1-1/4	32	24	12.55
N2135FR	1-3/8	35	20	12.90
N2142FR	1-5/8	42	18	15.85
N2154FR	2-1/8	54	14	19.95
N2167FR	2-5/8	67	10	24.10
N2170FR	3	76	8	28.50
N2175FR	3-1/2	90	8	38.00
N2191FR	4	102	8	39.50

19mm CELL PIPE INSULATION

STOCK NO.	ID (Inches)	ID (mm)	LGTHS PER CARTON	PRICE PER 2M LENGTH excl. GST
N2206FR	1/4	6	48	6.90
N2210FR	3/8	10	32	8.10
N2213FR	1/2	13	32	10.45
N2216FR	5/8	16	28	12.45
N2219FR	3/4	19	24	13.25
N2222FR	7/8	22	20	14.85
N2225FR	1	25	18	16.40
N2228FR	1-1/8	28	18	17.95
N2232FR	1-1/4	32	18	20.00

STOCK NO.	ID (Inches)	ID (mm)	LGTHS PER CARTON	PRICE PER 2M LENGTH excl. GST
N2235FR	1-3/8	35	16	20.95
N2242FR	1-5/8	42	12	25.15
N2254FR	2-1/8	54	8	31.85
N2260FR	2-3/8	60	8	35.60
N2267FR	2-5/8	67	8	38.85
N2276FR	3	76	6	44.70
N2279FR	3-1/8	79	6	45.65
N2285FR	4	102	4	51.30

25mm CELL PIPE INSULATION

STOCK NO.	ID (Inches)	ID (mm)	LGTHS PER CARTON	PRICE PER 2M LENGTH excl. GST
N2313FR	1/2	13	20	16.90
N2316FR	5/8	16	18	20.65
N2319FR	3/4	19	18	23.30
N2322FR	7/8	22	16	25.70
N2325FR	1	25	12	26.80
N2328FR	1-1/8	28	12	27.80

STOCK NO.	ID (Inches)	ID (mm)	LGTHS PER CARTON	PRICE PER 2M LENGTH excl. GST
N2335FR	1-3/8	35	10	32.65
N2342FR	1-5/8	42	8	37.00
N2354FR	2-1/8	54	8	49.95
N2367FR	2 5/8	67	6	55.25
N2376FR	3	76	6	63.55
N2378FR	4	102	4	79.00

- Maxflex performs best within the operating temperature range of -40°C to 105°C.
- Please contact Realold for availability of other sizes and wall thicknesses including 38mm wall.

CONTINUOUS ROLL TUBE INSULATION - 10mm WALL

STOCK NO.	ID (Inches)	ID (mm)	LENGTH	PRICE \$ excl. GST
N2400FR	1/4	6	38	59.00
N2401FR	3/8	10	34	59.00
N2402FR	1/2	13	31	65.00
N2403FR	5/8	16	27	65.00
N2404FR	3/4	19	23	65.00



SHEET INSULATION - 1.1 METERS SQUARE

STOCK NO.	Thickness (Inches)	Thickness (mm)	LENGTH x WIDTH	PRICE \$ excl. GST
N2409FR	3/8	10	1.22m x 0.91m	33.50
N2413FR	1/2	13	1.22m x 0.91m	45.00
N2419FR	3/4	19	1.22m x 0.91m	64.50
N2425FR	1	25	1.22m x 0.91m	85.00



SHEET INSULATION - ROLLS

STOCK NO.	Thickness (Inches)	Thickness (mm)	LENGTH x WIDTH	PRICE \$ excl. GST
N2451	3/8	10	15m x 0.91m	538.00
N2452	1/2	13	11m x 0.91m	526.00
N2454	3/4	19	7m x 0.91m	476.00
N2455	1	25	5m x 0.91m	453.00



INSULATION TAPE

STOCK NO.	DESCRIPTION	PRICE \$ excl. GST
N2506	Foam Tape Roll - Closed cells elastomeric, black colour, one side adhesive with protective film. Used for hot and cold pipe insulation. Can be used as joint protection. 3mm x 50mm x 10m roll – self adhering	28.00
N2510	Cork Tape Roll - Compounded with synthetic rubber, asphalt and cork dust. Ideal to prevent condensation on pipes. 3mm x 50mm x 10m roll – self adhering	35.00



INSULATION ADHESIVE

STOCK NO.	DESCRIPTION	SOLD PER	PRICE \$ excl. GST
N2500	Adhesive Glue (Brush not included)	700 g	27.50
T9055	Paint Brush		6.60



FOAM INSULATION

STOCK NO.	PRODUCT NUMBER	DESCRIPTION	PACK SIZE	PRICE \$ excl. GST
N0255	267414	Spray Foam	340 g	21.50
N0260	DR288	Foam Two Part A&B	1.25 Kg	61.50



COPPER SADDLES

STOCK NO.	SIZE	PRICE \$ excl. GST
J8235	1/4"	0.70
J8236	5/16"	0.80
J8238	3/8"	0.80
J8240	1/2"	0.85
J8243	5/8"	1.00
J8245	3/4"	1.20
J8248	7/8"	1.45

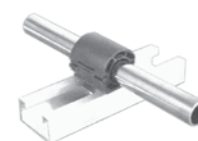
STOCK NO.	SIZE	PRICE \$ excl. GST
J8249	1"	2.20
J8250	1-1/8"	2.40
J8252	1-1/4"	2.80
J8253	1-3/8"	3.50
J8255	1-5/8"	4.40
J8258	2-1/8"	7.00



QUICK POSITIONING CLIPS

STOCK NO.	SIZE (Inches)	PRICE \$ excl. GST
J1590	3/8	4.95
J1591	1/2	5.10
J1592	5/8	5.30
J1593	3/4	5.35

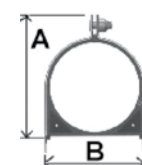
STOCK NO.	SIZE (Inches)	PRICE \$ excl. GST
J1594	7/8	5.45
J1595	1-1/8	5.60
J1596	1-3/8	5.75



Quick Positioning Clips are very simple pipe clip made from a UV resistant plastic. They are fitted into standard unistrut channels by just a single twist. The QPC's are ideal for smaller installations and can be used both externally and internally. They are tidy and give a professional finish to any installation.

INSULCLAMPS

STOCK NO.	SIZE (Inches)	DIMENSIONS		PRICE \$ excl. GST
		"A" (mm)	"B" (mm)	
J1601	1/4	31.00	15.00	4.40
J1603	3/8	34.93	19.05	4.50
J1604	1/2	38.10	23.81	4.50
J1605	5/8	42.75	25.40	4.65
J1606	3/4	44.45	30.16	4.75
J1607	7/8	49.21	33.34	4.90
J1608	1 1/8	53.96	36.51	5.30
J1609	1 3/8	60.33	44.45	5.80
J1610	1 5/8	73.03	53.98	7.05
J1611	2 1/8	88.90	68.26	9.55
J1612	2 5/8	101.60	80.96	14.30
J1613	3 1/8	114.30	93.66	16.65



Insulclamp is an effective pipe support and has first-rate insulations properties that reduce transmission of vibration and noise. It can withstand temperatures from minus (-)30°C to plus (+)125°C and has excellent resistance to oil, UV rays etc. Sizes 3.5/8", 4.1/8" are also available to order.

GRIP LOCKS

STOCK NO.	SIZE	LIQUID (including insulation)	SUCTION (including insulation)	PRICE \$ excl. GST
J1623	Size 1	1/4"	1/2"	5.75
J1625	Size 2	3/8"	5/8"	5.90
J1628	Size 3	1/2"	7/8"	6.25
J1630	Size 4	5/8"	1-1/8"	6.90



- Grip Locks provide a tidy, quick and secure means of securing insulated pipes to walls or ceilings.

BBJ RAPID INSUL CLIP

Ideal for securing insulated pipe or drain pipe to unistrut channel.

STOCK NO.	CLIP INSIDE DIAMETER		DESCRIPTION	SOLD PER	PRICE \$ excl. GST
J1581	7/8"	22 mm	Rapid Insul Clip 22mm	Each	4.85
J1582	1"	25 mm	Rapid Insul Clip 25mm	Each	5.40
J1583	1 1/8"	28 mm	Rapid Insul Clip 28mm	Each	5.90
J1584	1 1/4"	32 mm	Rapid Insul Clip 32mm	Each	6.45
J1585	1 3/8"	35 mm	Rapid Insul Clip 35mm	Each	6.95
J1586	1 1/2"	40 mm	Rapid Insul Clip 40mm	Each	7.50
J1587	1 5/8"	42 mm	Rapid Insul Clip 42mm	Each	8.00
J1588	2"	50 mm	Rapid Insul Clip 50mm	Each	8.60
J1589	2 1/8"	54 mm	Rapid Insul Clip 54mm	Each	9.15



RAPID STUDDING CLIP

Ideal for securing insulated pipe or drain pipe to 10mm threaded rod with easily adjusted height.

STOCK NO.	CLIP INSIDE DIAMETER		DESCRIPTION	SOLD PER	PRICE \$ excl. GST
J1570	7/8"	22 mm	Studding Clip 22mm	Each	3.95
J1571	1"	25 mm	Studding Clip 25mm	Each	4.10
J1572	1 1/8"	28 mm	Studding Clip 28mm	Each	4.25
J1573	1 1/4"	32 mm	Studding Clip 32mm	Each	4.35
J1574	1 3/8"	35 mm	Studding Clip 35mm	Each	4.50
J1575	1 1/2"	40 mm	Studding Clip 40mm	Each	4.80
J1576	1 5/8"	42 mm	Studding Clip 42mm	Each	5.05
J1577	2"	50 mm	Studding Clip 50mm	Each	6.50
J1578	2 1/8"	54 mm	Studding Clip 54mm	Each	6.50



BBJ METAL PIPE HANGER

Ideal for securing insulated pipe or drain pipe to 8mm or 10mm threaded rod with easily adjusted height.

STOCK NO.	SIZE (including insulation)	LIQUID (including insulation)	GAS (including insulation)	SOLD PER	PRICE \$ excl. GST
J1669	BBJ 2	3/8"	5/8"	Each	8.05
J1670	BBJ 3	1/2"	7/8"	Each	8.30
J1671	BBJ 4	5/8"	1-1/8"	Each	8.65



GALVANIZED UNISTRUT CHANNEL

STOCK NO.	PRODUCT NUMBER	DESCRIPTION	PRICE \$ excl. GST
J8293A	J2000G	Unistrut Slotted - 41mm x 41mm x 6m (1.6mm wall)	148.00
J8295A	J4000SG	Unistrut Slotted - 20mm x 41mm x 6m (1.6mm wall)	120.00
J8293B	J2000G	Unistrut Non Slotted - 41mm x 41mm 6m (1.6mm wall)	140.00
J8295	J4000G	Unistrut Non Slotted - 20mm x 41mm 6m (1.6mm wall)	112.00

- Other types and wall thicknesses available in store and upon request.



THREADED ROD

STOCK NO.	PRODUCT NUMBER	DESCRIPTION	PRICE \$ excl. GST
J8278	904201	10mm x 3000mm - Zinc plated	12.00
J8830	66931	10mm nuts to suit - Zinc plated (Pack of 50)	8.10
J8838	66934	10mm washers to suit - Zinc plated (Pack of 200)	16.50
J8285	10X1MBRTR	10mm x 1000 mm - Brass	72.00
J8288	M10	10mm nuts to suit - Brass	2.95
J8290	M10X21X1.2	10mm washers to suit - Brass	0.75

- Other sizes and fasteners available in store and upon request.



DRAIN PIPE

STOCK NO.	O.D (mm)	DESCRIPTION	PRICE \$ excl. GST
J3524	15	4 m length	7.35
J3525	20	4 m length	11.75



STOCK NO.	O.D (mm)	DESCRIPTION	PRICE \$ excl. GST
J3526	25	4 m length	17.65
J3526A	32	4 m length	25.35

ELBOWS

STOCK NO.	I.D (mm)	DESCRIPTION	PRICE \$ excl. GST
J3527	15	90° PVC	1.35
J3528	20	90° PVC	1.85
J3529	25	90° PVC	2.95
J3529A	32	90° PVC	5.85
J3530	15	45° PVC	1.75
J3531	20	45° PVC	3.75



STOCK NO.	I.D (mm)	DESCRIPTION	PRICE \$ excl. GST
J3532	25	45° PVC	4.40
J3532A	32	45° PVC	7.05

STOCK NO.	I.D (mm)	DESCRIPTION	PRICE \$ excl. GST
J3546	15	PVC sweep bend	3.80
J3548	20	PVC sweep bend	4.40
J3550	25	PVC sweep bend	5.85

TEES

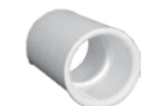
STOCK NO.	I.D (mm)	DESCRIPTION	PRICE \$ excl. GST
J3533	15	Tee PVC	1.75
J3534	20	Tee PVC	2.20



STOCK NO.	I.D (mm)	DESCRIPTION	PRICE \$ excl. GST
J3535	25	Tee PVC	4.40
J3535A	32	Tee PVC	7.35

UNIONS

STOCK NO.	I.D (mm)	DISCRIPTION	PRICE \$ excl. GST
J3536	15	Double End Union	0.75
J3537	20	Double End Union	1.20
J3538	25	Double End Union	2.35
J3538A	32	Double End Union	3.65



STOCK NO.	I.D (mm)	DISCRIPTION	PRICE \$ excl. GST
J3497	15	Barrell Union	11.75
J3498	20	Barrell Union	12.40
J3499	25	Barrell Union	13.20

REDUCERS

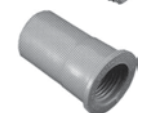
STOCK NO.	I.D (mm)	DESCRIPTION	PRICE \$ excl. GST
J3510	20 - 15	Reducer Socket	2.05
J3511	25 - 15	Reducer Socket	2.95
J3512	25 - 20	Reducer Socket	4.25
J3512A	32 - 20	Reducer Socket	6.50



STOCK NO.	I.D - O.D (mm)	DESCRIPTION	PRICE \$ excl. GST
J3512B	32 - 25	Reducer Socket	7.35
J3513	20 - 15	Reducing Bush	0.85
J3514	25 - 15	Reducing Bush	2.15
J3515	25 - 20	Reducing Bush	2.25

THREADED SOCKETS

STOCK NO.	SIZE (mm)	DESCRIPTION	PRICE \$ excl. GST
J3519	15	FM thread socket	1.45
J3520	20	FM thread Socket	2.00
J3521	25	FM thread Socket	2.55
J3521A	32	FM thread Socket	8.35



STOCK NO.	SIZE (mm)	DESCRIPTION	PRICE \$ excl. GST
J3516	15	M thread socket	1.45
J3517	20	M thread Socket	1.60
J3518	25	M thread Socket	2.25

SADDLES

STOCK NO.	I.D (mm)	DESCRIPTION	PRICE \$ excl. GST
J3502	15	Pipe Saddle	0.90
J3503	20	Pipe Saddle	0.95
J3504	25	Pipe Saddle	1.00
J3504A	32	Pipe Saddle	1.40
J3505	15	Pipe Saddle Zinc	0.30



STOCK NO.	I.D (mm)	DESCRIPTION	PRICE \$ excl. GST
J3506	20	Pipe Saddle Zinc	0.35
J3507	15	Stand off Bracket	7.65
J3508	20	Stand off Bracket	7.75
J3509	25	Stand off Bracket	7.85
J3509A	32	Stand off Bracket	10.50

J-TRAPS

STOCK NO.	PRODUCT NUMBER	DESCRIPTION	PRICE \$ excl. GST
J3539	EZT113	20mm Cross Trap - Clear	34.65
J3539B	EZT113B	20mm Cross Trap (with Brush)	41.35
J3544	EZT406	Cross Trap Brush Flexible	10.65
J3540	EZT210	Cross Trap Float Switch	125.35
J3541	EZT225	Float Switch Vert/Horiz	88.00
J3542	EZT150	Ultra Trap Blow Through	68.00
J3543	EZT160	Ultra Trap Pull through	118.00
J3500	JTRAP	J-Trap Clear Mould	16.00
J3565	PTK15	P Trap Kit 15 mm	5.50
J3570	PTK20	P Trap Kit 20 mm	7.00



CLEAR PVC HOSE

STOCK NO.	PRODUCT NUMBER	DESCRIPTION	PRICE \$ excl. GST
J3450	PVC 19MM	Clear PVC Hose 19mm - Meter	6.65
J3455	PVC 25MM	Clear PVC Hose 25mm - Meter	11.80



PVC SOLVENT

STOCK NO.	PRODUCT NUMBER	DESCRIPTION	PRICE \$ excl. GST
J3522	N070100	100g Tin Clear Solvent	5.85
J3523	N070500	500g Tin Clear Solvent	17.60

