

GREE ECO WINDOW-WALL SERIES



Reverse Cycle Window - Wall - R410A

Stock No.	Gree Model No.	Refrigerant	Cap kW Cool/Heat	Noise dBA High/Low	Weight (Kg)	Electric Supply	PRICE \$ excl. GST
AC2205	GJH09AB-K3MNB8A	R410A	2.7	49	43	230/1/50	765.00
			2.4	45			
AC2210	GJH12AD-K3MNB8A	R410A	3.5	53	54	230/1/50	865.00
			3	49			
AC2215	GJH18AC-K3MNB8A	R410A	5	55	73	230/1/50	1,155.00
			4.7	51			

Features & Benefits

- Exceeds the 2011 MEPS III annulised ratings
- R410A Refrigerant
- 4 Way Air Flow
- Easy Clean Filter
- 5 Year Parts and Labour Warranty, domestic use only



• 4 Way Air Flow



• Long distance airing



• Economic Sleep Mode



• Easy Cleaned Filter

SPECIFICATIONS			GJH09AB-K3MNB8A	GJH12AD-K3MNB8A	GJH18AC-K3MNB8A
Nominal Capacity	Cooling	kW	2.7	3.5	5
	Heating		2.4	3	4.7
Input	Cooling	kW	0.9	1.25	1.75
	Heating		0.8	1	1.56
Energy Label 2011	Cooling	Stars	1	1	1.5
	Heating		1.5	1.5	1.5
AEER	Cooling		3	2.9	2.9
ACOP	Heating		3	2.9	2.9
Current	Cooling	Amp	4.83	6.5	10.5
Recommended Circuit Breaker		Amp		16	
Sound Pressure Level (JIS C9612)	High	dBA	49	53	55
	Low		45	49	51
Airflow	Indoor	L/S	138	216	230
External Dimensions (H x W x D)	Indoor	mm	375 x 560 x 618	428 x 660 x 700	
Nett Weight		Kg	43	54	73
Refrigerant R410a	Pre-charged	Kg	0.78	0.81	1.07

GREE COZY HIGH-WALL FIXED SPEED SPLIT SYSTEMS

Reverse Cycle High Wall - R410A Fixed Speed

Stock No.	Gree Model No.	Refrigerant	Cap kW Cooling / Heating	Noise dBA IND/OUT	Weight (Kg) IND/OUT	Electric Supply	PRICE \$ excl. GST
AC2800	GWH09MB-K3NNA2B	R410A	2.74 / 2.85	32 / 50	10 / 40	230/1/50	980.00
AC2802	GWH12MB-K3NNA3B	R410A	3.38 / 3.26	32 / 52	10 / 41	230/1/50	1,080.00
AC2804	GWH18MC-K3NNA3B	R410A	5.28 / 5.7	38 / 54	13 / 46	230/1/50	1,520.00
AC2806	GWH24MD-K3NNA3B	R410A	6.15 / 6.75	46 / 58	16 / 64	230/1/50	2,050.00
AC2807	GWHN24FANK3A1C	R410A	7.0 / 7.6	49 / 58	18 / 72	230/1/50	2,240.00
AC2808	GWH28FA-K3NNA3B	R410A	8.0 / 8.8	49 / 58	18 / 68	230/1/50	2,500.00

Features & Benefits

- Energy Efficient without high capital outlay
- Rapid Cooling and Heating with turbo fan
- Exceeds 2011 MEPS III annulised ratings
- 5 metre connection cable included
- Healthy filter options
- 5 Year Parts and Labour Warranty, domestic use only



- Super Quiet Operation



- Easy Clean Flat Panel



- High-efficient curved heat exchanger



- Active Carbon Filter

SPECIFICATIONS			GWH09MB-K3NNA2B	GWH12MB-K3NNA3B	GWH18MC-K3NNA3B	GWH24MD-K3NNA3B	GWHN24FA-NK3A1C	GWH28FA-K3NNA3B
Nominal Capacity	Cooling	kW	2.74	3.38	5.28	6.15	7.0	8.0
	Heating		2.85	3.26	5.7	6.75	7.6	8.8
Input	Cooling	kW	0.80	0.99	1.70	2.04	2.35	2.64
	Heating		0.84	0.97	1.85	2.23	2.30	2.95
Energy Label 2011	Cooling	Stars	2	2	1.5	1.5	1.5	1.5
	Heating		2	2	1.5	1.5	1.5	1.5
AEER	Cooling		3.42	3.41	3.0	3.01	2.96	3.03
ACOP	Heating		3.39	3.36	3.17	3.03	3.39	2.98
Current	Cooling	Amp	3.82	4.29	8.29	9.81	10.36	12.42
Recommended Circuit Breaker		Amp	10		16	20		
Sound Pressure Level (JIS C9612)	Indoor	dBA	32	33	38	46	49	49
	Outdoor		50	52	54	58	58	58
Airflow	Indoor	L/S	167		217	222	333	
External Dimensions (H x W x D)	Indoor	mm	275 x 845 x 180	275 x 845 x 180	298 x 940 x 200	315 x 1007 x 219	326 x 1178 x 253	326 x 1178 x 253
	Outdoor		540 x 780 x 320	592 x 780 x 320	680 x 846 x 378	790 x 920 x 427	840 x 950 x 412	790 x 920 x 427
Nett Weight	Indoor	Kg	10	10	13	15.5	17.5	17.5
	Outdoor		40	41	46	64	72	68
Refrigerant Piping (Male Flare)	Liquid Line	mm (in)	6.35 (1/4")					
	Suction Line		9.5 (3/8")	12.7 (1/2")			15.9 (5/8")	
Refrigerant R410a	Pre-charged amount	Kg	1.23	1.02	1.55	2.1	2.1	2.6
		m	5					
Max. Piping Length	Overall/Heigh	m	15	20	25	25	30	30

GREE COZY HIGH-WALL INVERTER SPLIT SYSTEMS



Reverse Cycle High Wall - R410A DC Inverter

Stock No.	Gree Model No.	Refrigerant	Cap kW Nominal~Range	Noise dBA IND/OUT	Weight (Kg) IND/OUT	Electric Supply	PRICE \$ excl. GST
AC3111	GWH09MA-K3DNA*E	R410A	2.5 (0.35~3)	40~32	9	230/1/50	1,240.00
			2.8 (0.75~3.5)	50	35		
AC3113	GWH12MB-K3DNA*E	R410A	3.5 (0.95~4)	42~33	11	230/1/50	1,400.00
			3.85 (0.88~4.3)	52	36		
AC3115	GWH18MC-K3DNA*E	R410A	5 (1.26~6.15)	49~35	13	230/1/50	1,920.00
			5.56 (1.12~6.3)	52	47		
AC3117	GWH24MD-K3DNA*E	R410A	6.3 (1.4~6.8)	46~33	16	230/1/50	2,240.00
			6.76 (1.2~8)	54	50		
AC3119	GWH24ME-K3DNA*E	R410A	7.2 (1.4~8.7)	47~40	17,5	230/1/50	2,430.00
			8.2 (1.05~10)	59	65		

Features & Benefits

- New 180 Deg Sine Wave Inverter
- Lowest Energy Consumption
- Ultra Low Noise
- Exceeds the 2011 MEPS III annulised ratings
- 5 metre connection cable included
- Healthy filter options
- 5 Year Parts and Labour Warranty, domestic use only



• Super Quiet Operation



• Easy Clean Flat Panel



• High-efficient curved heat exchanger



• Active Carbon Filter

SPECIFICATIONS			GWH09MA-K3DNA*E	GWH12MB-K3DNA*E	GWH18MC-K3DNA*E	GWH24MD-K3DNA*E	GWH24ME-K3DNA*E
Nominal Capacity	Cooling	kW	2.5 (0.35~3)	3.5 (0.95~4)	5 (1.26~6.15)	6.3 (1.4~6.8)	7.2 (1.4~8.7)
	Heating	kW	2.8 (0.75~3.5)	3.85 (0.88~4.3)	5.56 (1.12~6.3)	6.76 (1.2~8)	8.2 (1.05~10)
Input	Cooling	kW	0.735	1.06	1.64	2.09	2.25
	Heating	kW	0.745	1.1	1.58	2.05	2.46
Energy Label 2011	Cooling	Stars	2	2	1.5	1	1.5
	Heating	Stars	2.5	2.5	2	2	2
AEER	Cooling		3.42	3.39	3.03	2.98	3.22
ACOP	Heating		3.54	3.55	3.28	3.26	3.3
Current	Cooling	Amp	3.26	4.34	6.9	8.8	10.8
Recommended Circuit Breaker	Amp		10		15	20	
Moisture Removal	L/H		1	1.4	2	2.5	2.5
Sound Pressure Level (JIS C9612)	Indoor	dBA	32	33	35	33	40
	Outdoor	dBA	50	52	54		59
Airflow	Indoor	L/S	137	163	236	250	320
External Dimensions (H x W x D)	Indoor	mm	265 x 790 x 170	370 x 918 x 258	298 x 940 x 200	315 x 1,008 x 219	326 x 1,178 x 253
	Outdoor	mm	540 x 776 x 320	595 x 881 x 363	700 x 955 x 424	700 x 955 x 424	790 x 920 x 427
Nett Weight	Indoor	Kg	9	11	13	16	17.5
	Outdoor	Kg	35	36	47	50	65
Refrigerant Piping	Liquid Line		6.35 (1/4")				
	Suction Line	mm (in)	6.35 (1/4")	12.7 (1/2")			15.88 (5/8")
	Conn Method		Flare				
Refrigerant R410a	Pre-charged amount	Kg	0.8	1.15	1.1	1.4	1.8
		m	5	5	5	5	7.5
Max. Piping Length	Overall/Heigh	m	20			30	

ECLIPSE AIR CURTAINS



Stock No.	Eclipse Model No.	Length (mm)	Fan Diameter (mm)	Input Power (Watts)	Air Speed (m/sec)	Noise dBA	Weight (Kg)	Electric Supply	PRICE \$ excl. GST
AC8790	FM-1.25-09	900	125	130	8	60	20	230/1/50	680.00
AC8792	FM-1.25-12	1200	125	170	8	60	24	230/1/50	760.00

SPECIFICATIONS	FM-1.25-09	FM-1.25-12
Cabinet Dimensions (mm)	900 x 215 x 193	1200 x 215 x 193
Min Install Height	2.5m	2.5m
Max Install Height	3.0m	3.0m
Remote	No	No
Electric Heater	No	No

Features & Benefits

- Adjustable air fins allow for the exact control of air for special applications such as sloping walls and cross winds.
- 2 Speed Fans.
- Operating Temperature range -15 to +50 °C.
- Easy Mounting System.
- Remote Control on heating model.
- 12 months warranty - parts only.

Air Curtains - The New Advantage in the Energy Battle

Energy Savings:

Recent studies have shown that by fitting an air curtain will save significant amounts of energy by providing environmental separation between indoor and outdoor temperatures. Pay back for some commercial applications can be as little as 21 weeks.

- **Improved Indoor Air Quality:**
Air curtains prevent dust, dirt and fumes from infiltrating and contaminating indoor areas.
- **Lower Construction Costs:**
With the use of air curtains Architects can design building without vestibules, saving construction costs and by eliminating the vestibule, providing more retail floor space.
- **Improved Working Conditions:**
Keeps out cold air at door openings and recirculates warm air from ceiling to floor for more comfortable working conditions.

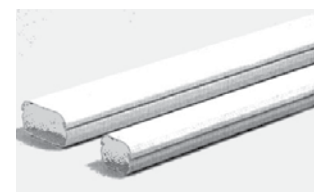
TOYO DUCTING



This attractive ivory coloured ducting is easy to install. The slim, square design of the duct and accessories has an aesthetic appearance which will enhance any installation. The duct is made of highly durable, weatherproof PVC resin. Suitable for use in the temperature range -20 to +60° C.

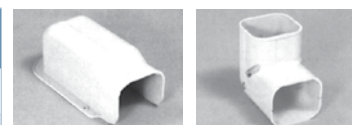


STOCK NO.	MODEL	DESCRIPTION	CARTON QTY	PRICE \$ excl. GST
AC0201	TD-80	80mm Duct - 2m lengths	5	28.50
AC0202	TD-120	120mm Duct - 2m lengths	4	48.50



TOYO DUCT ACCESSORIES - 80mm

STOCK NO.	MODEL	DESCRIPTION	CARTON QTY	PRICE \$ excl. GST
AC0206	DC-80	80mm Cap	20	12.50
AC0209	DK-80	80mm Corner	20	12.50
AC0215	DLW-80	80mm 45° Elbow	20	12.50
AC0217	DL-80	80mm 90° Elbow	20	12.50
AC0220	DJ-80	80mm Joint	50	5.00
AC0223	DE-80	80mm End Socket	20	12.50
AC0224	DS-80	80mm Ceiling Cap	20	12.50
AC0212	DF-80S	80mm Flexible Joint	20	12.50



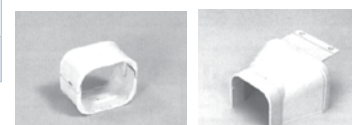
AC0206 / AC0207

AC0209 / AC0210



AC0215

AC0217 / AC0218



AC0220 / AC0221

AC0222

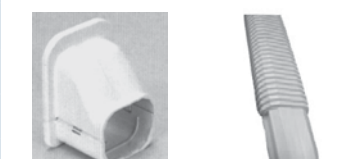
TOYO DUCT ACCESSORIES - 120mm

STOCK NO.	MODEL	DESCRIPTION	CARTON QTY	PRICE \$ excl. GST
AC0210	DC-120	120mm Cap	10	25.50
AC0213	DK-120	120mm Corner	6	25.50
AC0218	DL-120	120mm 90° Elbow	10	25.50
AC0221	DJ-120	120mm Joint	20	9.50
AC0222	DR-120	120mm Reducing Joint	10	18.00
AC0226	DS-120	120mm Ceiling Cap	10	25.50
AC0225	DT-120	120mm T-Joint	5	49.50



AC0233

AC0225



AC0224 / AC0226

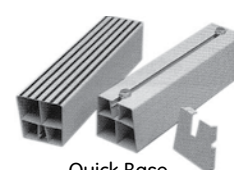
AC0211 / AC0212

TOYO OUTDOOR UNIT BASES

STOCK NO.	MODEL	DESCRIPTION	CARTON QTY	PRICE \$ excl. GST
AC0503	HB-450	Rigid Resin Base, Ivory 450mm	30	12.50
AC0510	BBB-45	Quick Base, Ivory 450mm	20	25.50
AC0515	PQB-45G	Quick Base, Grey 450mm	20	25.50
AC0520	PQB-100G	Quick Base, Grey 1000mm	10	36.50
AC0521	PQB-100I	Quick Base, Ivory 1000mm	10	42.00
AC0523	PQC-35	Quick Base Side Cover	=	6.80

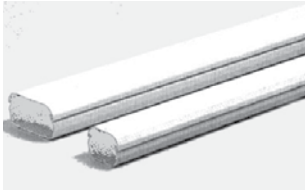


Rigid Resin Base



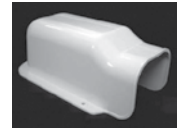
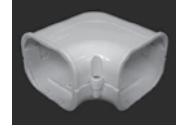
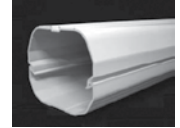
Quick Base

AUSSIE DUCT & ACCESSORIES - 100mm



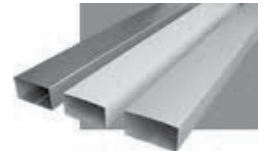
Manufactured from a premium grade UV stabilised compound, Aussie Duct Pipe Duct is ideal for Australian conditions which call for high impact strength and toughness.

STOCK NO.	MODEL	DESCRIPTION	CARTON QTY	PRICE \$ excl. GST
AC0203A	PD100LV	100mm Duct - 2m length	8	23.50
AC0206A	PD100WC	100mm Wall Cap	16	20.50
AC0217A	PD100E	100mm Elbow	12	20.50
AC0209A	PD100C	100mm Corner	20	20.50
AC0212A	PD100FJ	100mm Flexible Join	8	28.30
AC0221A	PD100J	100mm Duct Joiner	10	8.50
AC0224A	PD100CC	100mm Ceiling Cap	20	15.50
AC0225A	PD100RT	100mm Reducing Tee	2	47.80



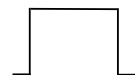
COLORBOND TRUNKING

STOCK NO.	MODEL	DESCRIPTION	PRICE \$ excl. GST
AC0753	CC/BON	2.4m Trunking - Various Colour Available	44.00
AC0754	CC/GAL	2.4m Trunking - Galvanised	44.00



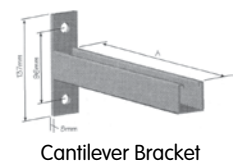
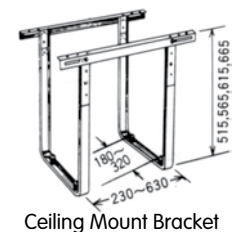
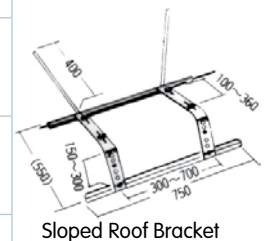
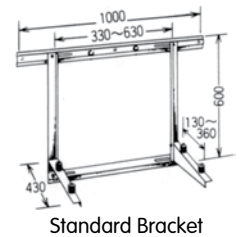
COLORBOND HAT-SECTION

STOCK NO.	MODEL	DESCRIPTION	PRICE \$ excl. GST
AC1070	HS/CRM	Colorbond Hatsection 2.4m - Cream	40.00
AC1071	HS/PB	Colorbond Hatsection 2.4m - Paperbark	40.00
AC1072	HS/GRN	Colorbond Hatsection 2.4m - Green	40.00
AC1073	HS/WHT	Colorbond Hatsection 2.4m - White	40.00



A/C UNIT MOUNTING BRACKETS

STOCK NO.	MODEL	DESCRIPTION	PRICE \$ excl. GST
AC0639	Bracket 450	Standard Wall Type - For 3.5kW or smaller unit Dimensions 450mm x 450mm x 800mm Max Weight 180kg	45.10
AC0638	Bracket 550	Standard Wall Type - For 10kW or smaller unit Dimensions 550mm x 500mm x 1000mm Max Weight 250kg	54.30
AC0611	Toyo QKK-1	Standard Wall Type - For 3.2kW or smaller unit Width 260-760mm Depth 80- 300mm Max Weight 60kg	97.30
AC0610	Toyo QKKL-1	Standard Wall Type - For 8kW or smaller unit Width 260-760mm Depth 180- 400mm Max Weight 100kg	135.30
AC0603	Toyo AH-YDII	Sloped Roof Bracket - For 5.0kW or smaller class Width 250-700mm Depth 100-360mm Slope 11° - 30° Max Weight 75kg	126.05
AC0605	Toyo PC-YG60 (Galvanized)	Sloped Roof Bracket - For 10.0kW or smaller class Width 400-1000mm Depth 300-430mm Slope 14° - 30° Max Weight 150kg	390.00
AC0632	AH-TD	Ceiling Type Bracket - For 5.0kW or smaller unit Width 230- 630mm Depth 190- 320mm Max Weight 75 kg	159.90
J8523	J2701SPL	Heavy duty - Galvanised cantilever bracket 450mm Deep - Long back brace	75.90
J8524	J2702SPL	Heavy duty - Galvanised cantilever bracket 600mm Deep - Long back brace	91.75
J8525	J2703SPL	Heavy duty - Galvanised cantilever bracket 780mm Deep - Long back brace	109.70
J8526	J2701	Heavy duty - Galvanised cantilever bracket 450mm Deep - Standard back brace	45.60
J8528	J2702	Heavy duty - Galvanised cantilever bracket 600mm Deep - Standard back brace	58.40
J8529	J2703	Heavy duty - Galvanised cantilever bracket 780mm Deep - Standard back brace	71.70



POLYSLAB - OUTDOOR UNIT MOUNTING BASES

Polyslab is made from an extremely tough composite material with added UV protection. It eliminates the need for bulky, dirty and unsightly products. PolySlab provides a lighter, safer alternative to dangerously heavy precast concrete products including slabs and pavers.

STOCK NO.	MODEL	DESCRIPTION	PRICE \$ excl. GST
AC6004	PSAC-SML	Polyslab 640mm x 340mm x 50mm High	38.00
AC6005	PSAC-MED	Polyslab 885mm x 465mm x 50mm High	45.00
AC6006	PSAC-LGE	Polyslab 1130mm x 655mm x 50mm High	95.00
AC6008	PSH-WS	Polyslab 690mm x 690mm x 50mm (For hot water cylinder)	42.00



EVO-CRETE - OUTDOOR UNIT MOUNTING BASES

EVO-CRETE is a reinforced Cellular Concrete which creates a dynamic cellular structure with fibre reinforcing to provide extreme strength and durability. The lightweight design reduces Occupational Health and Safety manual handling risks associated with heavy concrete and replaces inferior heavy and non-structural polystyrene fillers.

STOCK NO.	MODEL	DESCRIPTION	PRICE \$ excl. GST
AC6020	EVO-CRETE	Evo-Crete Slab 900mm x 450mm x 50mm High	45.00
AC6025	EVO-ACB	Evo-Crete Blocks 450mm x 80mm x 110mm High	38.00



■ Please contact Realcold for other outdoor unit mounting options.

ASPEN COMPACT PUMPS

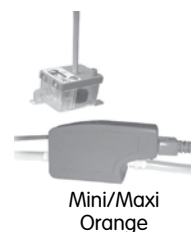


Aspen has built a reputation for designing reliable and quiet pumps that can be installed where space is very limited. These pumps are most commonly used on split systems on applications where condensate water cannot be drained with gravity alone.

Realcold stock a range of Aspen Mini Pumps for every need, they can be installed in the ceiling or on the internal wall with their own aesthetically pleasing pipe capping which allows easy maintenance.



STOCK NO.	PRODUCT NAME	DESCRIPTION	PRICE \$ excl. GST
T0939	Mini Aqua	Designed to be installed behind wall mounted evaporator or in plastic ducting - Ultra Thin. Flow Rate: 14Lt/hr max @ zero head Discharge Head: 8m max Non continuously rated - 5 min. on / 5 min. off Noise Rating: 23dB(A) When primed with water. Maximum Cooling Capacity: 7kw @ 1m Head	315.00
T0940	Mini Orange	Designed to be installed above a false ceiling where possible or behind wall mounted evaporator or in plastic ducting. Flow Rate: 14Lt/hr max @ zero head Discharge Head: 8m max Continuously rated run Noise rating: 23dB(A) When primed with water. Maximum Cooling Capacity: 7kw @ 1m Head	315.00
T0941	Maxi Orange	Designed to be installed above a false ceiling where possible or behind wall mounted evaporator or in plastic ducting. Flow Rate: 37Lt/hr max @ zero head Discharge Head: 20m max Non Continuously rated - 5 min. on / 5 min. off Noise Rating: 35dB(A) When primed with water. Maximum Cooling Capacity: 17kw @ 1m Head	363.00
TA0903	Mini Blanc Deluxe	Designed to be fitted below the indoor unit, the Mini Blanc offers an extremely easy to install Mini pump for all wall and ceiling suspended indoor units. Flow Rate: 12L/hr @ zero head Discharge Head: 10m MAX Noise Rating: 21dB(A) @ 1m Maximum Cooling Capacity: 8kw @1m Head	315.00
T0949	Mini Lime Silent	Designed to make installation easy on wall mounted evaporators by providing the pump complete with plastic ducting, in which the pump and pipework are hidden. Flow Rate: 11Lt/hr max @ zero head Discharge Head: 10m max Continuously rated run Noise Rating: 21dB(A) When primed with water. Maximum Cooling Capacity: 7kw @ 1m Head	442.00
T0942	Maxi Lime	Designed to make installation easy on wall mounted evaporators by providing the pump complete with plastic ducting, in which the pump and pipework are hidden. Flow Rate: 22Lt/hr max @ zero head Discharge Head: 15m max Non Continuously rate - 10 min. on / 5 min. off Noise Rating: 35dB(A) When primed with water. Maximum Cooling Capacity: 17kw @ 1m Head	521.00



- All above condensate pumps require a 240V power supply.
- All models include alarm contacts.

ASPEN TANK CONDENSATE PUMPS



When looking for reliability, performance and value for money, Aspen tank pumps are the perfect solution. Aspen's continued focus on innovation has created a market leading range of tank pumps, designed to suit a diverse array of applications. With reliability as the key decision criteria, the tank pumps are designed to perform even under the most challenging of applications.



STOCK NO.	PRODUCT NUMBER	DESCRIPTION	PRICE \$ excl. GST
TA0901	High Flow 2ltr Tank	Where the collection of condensate water is required in a Tank before discharge to waste and where HIGH FLOW rate is required. (Centrifugal pump type) Tank Capacity: 2Ltr Flow Rate: 288Lt/hr max Discharge Head: 4.6M max	285.00
TA0900	High Flow 1ltr Tank	As Above with Reduced size 1Ltr Tank - For lower profile	275.00
TA0906	High Lift 2ltr Tank	Where the collection of condensate water is required in a Tank before discharge to waste and where HIGH LIFT is required at LOW FLOW. (Peristaltic pump type) Tank capacity: 2Ltr Flow Rate: 11Lt/hr max Discharge Head: 12M max	498.00
TA0915	High Lift 1ltr Tank	As Above with Reduced size 1Ltr Tank - For lower profile	493.00
T0908	Heavy Duty Pump	Designed to collect hot water from Humidifier drain down cycles and normal condensate water. Tank Capacity: 5Ltr Flow rate: 1800Lt/hr max Discharge Head: 15M max	1,518.00
T0948	Hot Water Pump	Designed to collect hot water from Humidifier drain down cycles and normal condensate water. Max Water Temp 100°C Tank Capacity: 4Ltr Flow Rate: 900Lt/hr max Discharge Head: 6M max	1,175.00



High Flow



High Lift



Heavy Duty

- All above condensate pumps require a 240V power supply
- All models include alarm contacts

PUMP ACCESSORIES

STOCK NO.	DESCRIPTION	PRICE \$ excl. GST
TA0919	Aspen Replacement Head Tube to suit Peristaltic pumps	27.00
TA0920	PVC Tube Clear 1/4" (6mm) 30 m	27.00
TA0925	PVC Tube Clear 3/8" (10mm) 30 m	82.00



ASPEN UNDER-CABINET PUMPS

✓ **Ideal For Supermarket Cabinets**



A complete solution to the growing demand for reliable condensate removal within the retail refrigeration industry. The retail refrigeration pumps are low in height which means they can be easily installed underneath a refrigeration cabinet, where direct drainage is not available and water needs to be pumped up above the ceiling and away to a suitable drain. The high capacity of the pumps also permits the draining of several cabinets together. The pumps are operated by floats which activate sensors as the water level rises in the tank.



STOCK NO.	PRODUCT NUMBER	DESCRIPTION	PRICE \$ excl. GST
TA0910	ERRP (Top Inlet)	A simple yet very effective solution for the removal of water from supermarket retail refrigeration cabinets. Tank Capacity: 11Ltr Flow Rate: 255Ltr/hr max Discharge Head: 35M max Dimensions: 590mm L x 405mm W x 100mm H	1,577.00
TA0908	ERRP Low Profile (Top Inlet)	A Low Profile effective solution for the removal of water from supermarket retail refrigeration cabinets. Tank Capacity: 3.5Ltr Flow Rate: 190Ltr/hr max Discharge Head: 21M max Dimensions: 530mm L x 240mm W x 75mm H	1,518.00
TA0909	ERRP Low Profile (Side Inlet)	A Low Profile effective solution for the removal of water from supermarket retail refrigeration cabinets. Tank Capacity: 3.5Ltr Flow Rate: 190Ltr/hr max Discharge Head: 21M max Dimensions: 530mm L x 240mm W x 75mm H	1,518.00



PERISTALTIC PUMPS

✓ **Ideal For Cassette Units**



Peristaltic pumps can offer an ideal solution for condensate removal due to the combination of quietness, reliability and installation advantages. The Peristaltic rotary movement generates a continuous pressure meaning that the pump can be sited over 15m away from the condensate source, with no effect on performance. The pump mechanism does not come into contact with the water and therefore they do not require a filter and will operate quietly wet or dry.
(To ensure condensate removal these pumps include a 3min overrun)

STOCK NO.	PRODUCT NUMBER	DESCRIPTION	PRICE \$ excl. GST
T0947	Standard	Pump operates by being hard wired to cooling signal - starts when unit starts, Flow rate: 6Ltr/hr max Discharge Head: 12 max	475.00
T0945	Mechanical	Removes condensate water QUIETLY and RELIABLY. Pump operates using a remote reservoir and float. Flow rate: 6Ltr/hr max Discharge Head: 12m max	498.00
T0946	Universal Pump	Pump operates using coil inlet & outlet sensors which detect a change in air temperature and switches at 5°C differential across the evaporator. Flow rate: 6Ltr/hr max Discharge Head: 12m max	594.00



Standard



Mechanical

- All above condensate pumps require a 240V power supply.
- All models include alarm contacts.