

DISCHARGE MUFFLERS

STOCK NO.	CONN SIZE	DIMENSIONS L x Dia (mm)	PRICE \$ excl. GST	STOCK NO.	CONN SIZE	DIMENSIONS L x Dia (mm)	PRICE \$ excl. GST
F0512	3/8"	185 x 50	54.50	F0520	1 1/8"	245 x 75	112.00
F0513	1/2"	185 x 50	57.00	F0521	1 3/8"	345 x 100	115.00
F0515	5/8"	185 x 50	59.00	F0522	1 5/8"	460 x 100	120.00
F0518	7/8"	235 x 75	62.50				



Discharge Mufflers are designed to eliminate pulsation noise in discharge lines between the compressor and the condenser. Mufflers have internal baffles designed for minimum pressure drop. These baffles change the velocity of the discharge gases passing through the muffler, resulting in a dampening effect on high frequency sound waves on high speed compressors and also smoothing out the pulsating discharge sound waves in low speed compressors.

SUCTION ACCUMULATORS

STOCK NO.	CONN SIZE	DIMENSIONS H x Dia (mm)	Price excl. GST	STOCK NO.	CONN SIZE	DIMENSIONS H x Dia (mm)	Price excl. GST
F0104	1/2"	250 x 100	115.00	F0108	1 1/8"	390 x 150	220.00
F0105	5/8"	310 x 100	130.00	F0109	1 3/8"	470 x 150	265.00
F0106	3/4"	310 x 125	145.00	F0110	1 5/8"	550 x 150	345.00
F0107	7/8"	350 x 125	188.00	F0111	2 1/8"	750 x 215	780.00



SUCTION ACCUMULATORS (With Internal Liquid Line Heat Exchanger)

STOCK NO.	CONNECTION SIZE		DIMENSIONS		Price excl. GST
	SUCTION LINE	LIQUID LINE	DIAMETER (mm)	HEIGHT (mm)	
F0129	1 1/8"	5/8	160	440	645.00
F0130	1 3/8"	5/8	170	560	685.00
F0131	1 5/8"	3/4	170	620	750.00
F0132	2 1/8"	7/8	215	810	1,085.00

Heat Exchange (HE) Accumulators have the liquid line passing through them offering heat exchange between the liquid and suction lines. This creates positive temperature change on the suction line, boiling off liquid in the accumulator, protecting the compressor and reducing frost build up. Sub-cooling liquid ensures solid liquid is supplied to the TX valves, stabilising superheat and increasing evaporator capacity.



NORTHPEAK OIL SEPARATORS (Internal Float)

STOCK NO.	CONN SIZE	CHARGE LTRS	R404A kw		R134A kw		DIMENSIONS H x Dia (mm)	PRICE \$ excl. GST
			-25°C	-5°C	-5°C	+5°C		
F0068	3/8"	0.4	4.0	5.0	4.5	5.0	210 x 100	195.00
F0070	1/2"	0.5	5.5	6.5	6.0	6.5	260 x 100	218.00
F0072	5/8"	0.5	15.5	17.5	16.5	17.5	360 x 100	240.00
F0074	7/8"	0.5	25	31	23	25	450 x 150	275.00
F0076	1 1/8"	0.6	31	38	28	31	530 x 150	295.00
F0078	1 3/8"	0.6	43	48	43	45	540 x 150	330.00



REFRICOMP OIL SEPARATORS (Helical / Internal Float)

STOCK NO.	CONN SIZE	CHARGE LTRS	R404A kw		R134A kw		DIMENSIONS H x Dia (mm)	PRICE \$ excl. GST
			-25°C	-5°C	-5°C	+5°C		
F0142	1-1/8"	0.5	42	48	32	35	400 x 140	450.00
F0144	1-3/8"	0.5	53	60	42	46	400 x 140	460.00
F0146	1-5/8"	0.5	78	98	68	75	400 x 200	660.00



REFRICOMP OIL SEPARATORS/RESERVOIR (Helical / External Float)

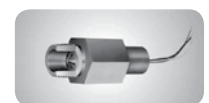
STOCK NO.	CONN SIZE	CHARGE LTRS	R404A		R134A		DIMENSIONS H x Dia (mm)	PRICE \$ excl. GST
			-25°C	-5°C	-5°C	+5°C		
F0150	1-1/8"	4	44	55	38	42	550 x 140	780.00
F0152	1-3/8"	11	78	98	68	75	650 x 220	1,020.00
F0154	1-5/8"	11	84	105	72	80	650 x 220	1,080.00
F0156	2-1/8"	17	104	130	90	100	850 x 220	1,260.00
F0158	2-5/8"	25	216	270	190	210	850 x 275	1,680.00



- Helical (Centrifugal) type oil separators offer high efficiency oil removal of up to 99%.
- External float models include 2 x oil level sight glass & oil return shut off valve.
- Specified oil charge is oil charge required to fill reservoir to top sight glass.
*50% of this value is usually adequate for most close coupled systems.

OIL CONTROL ACCESSORIES

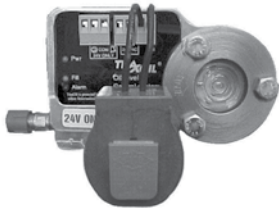
STOCK NO.	PRODUCT NUMBER	DESCRIPTION	PRICE \$ excl. GST
H0100	308083	Compact Oil Strainer 083 3/8" Flare - 147mm Long x 64mm dia	126.00
SP2600	OF-303	Sporlan OF-303 Oil Filter 3/8" Flare	320.00
SP2601	OF-303-BP	Sporlan OF-303-BP Oil Filter W/Bypass 3/8" Flare	355.00
SP2605	ROF-413	Sporlan Demountable Oil Shell ROF-413	350.00
SP2608	OFE-1	Sporlan Oil Element C/W Gasket OFE-1	198.00
SP2650	S-OL	Sporlan S-OL Oil Sight Glass	44.00
F1012	S-9420A	Henry N/O Liquid/Oil Level Switch 1/2" MPT	377.00
F1012B	S-9420	Henry N/C Liquid/Oil Level Switch 1/2" MPT	377.00



Liquid Level Switch

- Please contact Realcold for more information on the above oil control accessories.

TRAXOIL OIL LEVEL CONTROLS



TraxOil - Oil Management Systems replace the oil level sight glass on the compressor and offers accurate detection and control of the oil level. The TR3 series monitors, opens integrated solenoid valve to allow filling and signals an alarm if the oil level falls too low. Three LED indicators show the status of the oil management system. Green LED indicates oil level is optimised, The yellow LED indicates the solenoid is open and oil refilling is in progress and the red LED signals that the oil level is below minimum in which case the alarm relay is also activated.

STOCK NO.	PRODUCT NUMBER	DESCRIPTION	PRICE \$ excl. GST
F0994	TR3201	UNIVERSAL OIL LEVEL SYSTEM WITH FLANGE ADAPTOR 3-4 HOLE Suits most semi-hermetic compressors and brands including: Frascold, Copeland, Bitzer, Bock, Dorin	558.00
F0996	TR3203	OIL LEVEL SYSTEM WITH SCREW ADAPTOR 1-1/8" - 18 UNEF Suits some semi-hermetic compressors and also some hermetic including Maneurop and Tecumseh	558.00
F0999	TR3212	OIL LEVEL SYSTEM WITH SCREW ADAPTOR 1-3/4" - 12 UNF (Rotolock) Suits Copeland ZB, ZR, ZP, ZF	558.00
F0992	OW3001	OIL LEVEL MONITORING SYSTEM FOR ALARM & SYSTEM SHUTDOWN Suits most semi-hermetic compressors and brands including: Frascold, Copeland, Bitzer, Bock, Dorin	325.00
F0990	TFR001	240 - 24V, 30VA transformer to suit Traxoil controls (1 x Traxoil each)	82.50

- Please contact Realcold if you require assistance with selecting the correct TraxOil for your compressor & application.

NORTHPEAK VERTICAL LIQUID RECEIVERS

STOCK NO.	PRODUCT NUMBER	CAPACITY kg @ 80%	CONNECTIONS		DIMENSIONS (mm)		PRICE \$ excl. GST
		R404A	INLET	OUTLET	HEIGHT	DIAMETER	
C5701	AR - 101	1.0	1/4"	1/4"	180	90	95.00
C5702	AR - 102	2.0	3/8"	3/8"	210	120	125.00
C5703	AR - 103	3.0	3/8"	3/8"	340	120	150.00
C5704	AR - 104	4.0	1/2"	1/2"	270	150	190.00
C5705	AR - 105	5.0	1/2"	1/2"	230	180	230.00



- Northpeak vertical liquid receivers have solder inlet and come complete with outlet rotolock valve.

SKY VERTICAL LIQUID RECEIVERS

STOCK NO.	PRODUCT NUMBER	CAPACITY kg @ 80%	CONNECTIONS		DIMENSIONS (mm)		PRICE \$ excl. GST
		R404A	INLET	OUTLET	HEIGHT	DIAMETER	
HD7015	ACR30982	6.5	1" RL	1/2"	390	180	320.00
HD7020	ACR309109	8.5	1" RL	1/2"	500	180	340.00
HD7025	ACR309145	11.5	1" RL	1/2"	430	220	420.00



- Sky vertical liquid receivers include relief valve port. Roto-lock valve to be ordered separately (H1014) 1"RL x 1/2"ID

HORIZONTAL LIQUID RECEIVERS

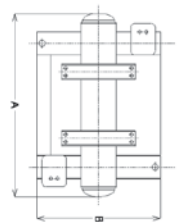
STOCK NO.	PRODUCT NUMBER	CAPACITY kg @ 80%	CONNECTIONS		DIMENSIONS (mm)		PRICE \$ excl. GST
		R404A	INLET	OUTLET	LENGTH	DIAMETER	
C5715	AR - 115	15	5/8"	7/8"	1100	150	450.00
C5727	AR - 127	27	5/8"	7/8"	1300	180	520.00
C5742	AR - 142	42	1-1/8"	7/8"	2000	180	780.00



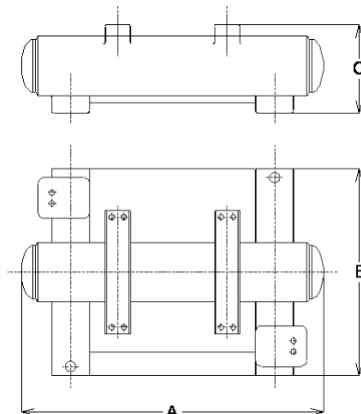
- Above Horizontal liquid receivers come complete with rotolock valves and relief valve port.

HORIZONTAL LIQUID RECEIVERS (With Compressor Mounts)

STOCK NO.	PRODUCT NUMBER	CAPACITY kg @ 80%	CONNECTIONS		DIMENSIONS (mm)			PRICE \$ excl. GST
		R404A	INLET	OUTLET	A	B	C	
C5730	RES 075-4	19	7/8"	7/8"	1000	800	260	1,080.00
C5732	RES 5-15	29	7/8"	7/8"	1000	800	300	1,380.00
C5734	RES 15-30	35	1 1/8"	7/8"	1300	800	300	1,680.00
C5736	RES 30-50	48	1 1/8"	7/8"	1000	900	360	2,100.00



- Above Horizontal liquid receivers come complete with rotolock valves and relief valve port.



SPORLAN LIQUID LINE DRIERS



Catch-All® Filter-Driers are universally accepted. This is due to their unique moulded porous core, consisting of a blend of highly effective desiccants. The Catch-All Filter-Drier will filter out scale, solder particles, carbon, sludge, dirt or any other foreign matter with negligible pressure drop. Fine particles that would go through an ordinary strainer are removed down to a minimum size in one pass filtration. The large filtering area of the core permits it to collect a large amount of dirt and other contaminants without blocking up.

LIQUID LINE DRIERS - FLARE

STOCK NO.	PRODUCT NUMBER	CONN SIZE FLARE	kW SELECTION RECOMMENDATION			LENGTH (mm)	DESICCANT VOLUME (cm ³)	PRICE \$ excl. GST
			R404A	R22	R134a			
SP3001	C032	1/4"	0.9	0.9	0.9	106	49	26.80
SP3003	C033	3/8"	0.9	0.9	0.9	106	49	29.00
SP3005	C052	1/4"	1.2	1.2	1.2	121	82	35.40
SP3008	C053	3/8"	1.2	1.2	1.2	132	82	35.40
SP3010	C082	1/4"	1.8	1.8	1.8	143	148	42.30
SP3013	C083	3/8"	3.5	3.5	3.5	154	148	42.30
SP3015	C084	1/2"	3.5	5.3	5.3	160	148	42.90
SP3017	C162	1/4"	2.6	5.3	3.5	159	262	52.90
SP3020	C163	3/8"	7.0	7.0	7.0	171	262	52.90
SP3022	C164	1/2"	7.0	10.6	7.0	176	262	57.50
SP3025	C165	5/8"	7.0	10.6	7.0	184	262	60.00
SP3027	C303	3/8"	7.0	10.6	10.6	251	492	98.50
SP3030	C304	1/2"	10.6	17.6	10.6	251	492	98.50
SP3032	C305	5/8"	17.6	17.6	17.6	259	492	98.50
SP3033	C306	3/4"	17.6	17.6	17.6	259	492	125.00
SP3034	C414	1/2"	17.6	17.6	17.6	252	672	146.00
SP3037	C415	5/8"	26.4	26.4	26.4	260	672	149.00

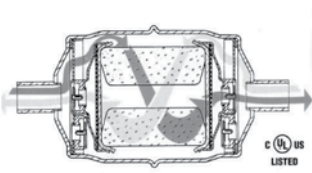


LIQUID LINE DRIERS - SOLDER

STOCK NO.	PRODUCT NUMBER	CONN SIZE SOLDER	kW SELECTION RECOMMENDATION			LENGTH (mm)	DESICCANT VOLUME (cm ³)	PRICE \$ excl. GST
			R404A	R22	R134a			
SP3101	C032S	1/4"	0.9	0.9	0.9	106	49	26.80
SP3102	C033S	3/8"	0.9	0.9	0.9	106	49	29.00
SP3105	C052S	1/4"	1.2	1.2	1.2	121	82	35.40
SP3108	C053S	3/8"	1.2	1.2	1.2	132	82	35.40
SP3110	C082S	1/4"	1.8	1.8	1.8	143	148	42.30
SP3113	C083S	3/8"	3.5	3.5	3.5	154	148	42.30
SP3115	C084S	1/2"	3.5	5.3	5.3	160	148	42.90
SP3117	C162S	1/4"	2.6	5.3	3.5	146	262	52.50
SP3120	C163S	3/8"	7.0	7.0	7.0	171	262	52.50
SP3122	C164S	1/2"	7.0	10.6	7.0	176	262	57.50
SP3125	C165S	5/8"	7.0	10.6	7.0	184	262	60.00
SP3126	C167S	7/8"	7.0	10.6	7.0	176	262	79.00
SP3127	C303S	3/8"	7.0	10.6	10.6	251	492	98.50
SP3128	C307S	7/8"	17.6	17.6	17.6	259	492	109.00
SP3129	C309S	1-1/8"	17.6	17.6	17.6	248	492	122.50
SP3130	C304S	1/2"	10.6	17.6	10.6	251	492	98.50
SP3132	C305S	5/8"	17.6	17.6	14.1	259	492	98.50
SP3134	C414S	1/2"	17.6	17.6	17.6	230	672	146.00
SP3137	C415S	5/8"	26.4	26.4	26.4	237	672	149.00
SP3139	C417S	7/8"	26.4	26.4	26.4	249	672	155.00
SP3141	C419S	1-1/8"	35.2	42.2	35.2	248	672	160.00



SPORLAN BI-DIRECTIONAL DRIERS



- **Sporlan Bi-flow driers** operate in either flow direction with low pressure drop
- Proven metal check valves used in construction – non synthetic materials
- Sporlan dependable moulded core used for maximum filtration. When the flow direction reverses, dirt already collected remains in the filter-drier.
- A carefully engineered blend of desiccants for maximum water capacity and acid removal ability. The HPC-160-HH Series also has the HH style core with activated charcoal which offer maximum ability to remove resin and other reactive chemical constituents in the oil.

BI-DIRECTIONAL DRIERS - FLARE

STOCK NO.	PRODUCT NUMBER	CONNECTION SIZE	LENGTH (mm)	DIAMETER (mm)	DESICCANT VOLUME (cm ³)	PRICE \$ excl. GST
SP0493	HPC-103	3/8" MF	172	76	168	75.60
SP0495	HPC-104	1/2" MF	176	76	168	77.60
SP0498	HPC-163-HH	3/8" MF	198	76	230	123.60
SP0500	HPC-164-HH	1/2" MF	202	76	230	123.60
SP0503	HPC-165-HH	5/8" MF	210	76	230	126.60



BI-DIRECTIONAL DRIERS - SOLDER

STOCK NO.	PRODUCT NUMBER	CONNECTION SIZE	LENGTH (mm)	DIAMETER (mm)	DESICCANT VOLUME (cm ³)	PRICE \$ excl. GST
SP0505	HPC-103S	3/8" ODS	149	76	168	75.60
SP0508	HPC-104S	1/2" ODS	152	76	168	77.60
SP0510	HPC-105S	5/8" ODS	160	76	168	77.60
SP0513	HPC-163S-HH	3/8" ODS	176	76	230	123.60
SP0515	HPC-164S-HH	1/2" ODS	180	76	230	123.60
SP0518	HPC-165S-HH	5/8" ODS	187	76	230	126.60
SP0530	HPC-307S-HH	7/8" ODS	280	76	492	199.80



SUCTION LINE FILTER DRIERS (For Burnout Or Clean Up)

STOCK NO.	PRODUCT NUMBER	CONNECTION SIZE	LENGTH (mm)	DIAMETER (mm)	DESICCANT VOLUME (cm ³)	PRICE \$ excl. GST
SP0470	C084STHH	1/2" ODS	138	66	148	69.70
SP0483	C164STHH	1/2" ODS	152	76	262	99.80
SP0484	C165STHH	5/8" ODS	176	76	262	99.80
SP0485	C305THH	5/8" ODS	245	76	492	155.00
SP0488	C307STHH	7/8" ODS	249	76	492	162.00
SP0489	C419STHH	1 1/8" ODS	248	88	671	222.00
SP0491	C4311STHH	1 3/8" ODS	278	121	787	328.00



SUCTION LINE FILTER DRIERS (Compact - Pancake Type)

STOCK NO.	PRODUCT NUMBER	CONNECTION SIZE	LENGTH (mm)	DIAMETER (mm)	DESICCANT VOLUME (cm ³)	PRICE \$ excl. GST
SP0473	C145STHH	5/8" ODS	110	112	229	124.20
SP0475	C146STHH	3/4" ODS	123	112	229	132.50
SP0478	C147STHH	7/8" ODS	126	112	229	136.00
SP0480	C149STHH	1 1/8" ODS	125	112	229	146.00



- Suction filters may create excessive pressure drop on some application and may need to be removed after clean-up. Please contact Realcold for further information and correct selection.

SPORLAN DRIER CORES

STOCK NO.	PRODUCT NUMBER	DESCRIPTION	APPLICATION	PRICE \$ excl. GST
SP3202	RC4864	Drier Core Standard	General use	54.00
SP3208	RCW48	Drier Core High Moisture	High Moisture	87.00
SP3205	RC4864HH	Drier Core - Burn Out	Burn Out or Clean Up	77.00
SP3211	RPE48BD	Filter Element	Suction Side Filtration	62.00



RC-4864 – Activated Core

This high quality standard core consists of a blend of highly effective desiccants. Suitable for most installations in the liquid or suction line applications.

RCW-48 – High Water Capacity Core

Designed specially for use with POE oils. This core should be used on systems that have a ruptured water cooled condenser, or that have been exposed to the atmosphere, or for some reason have a high amount of moisture in the system.

RC-4864-HH – Activated Charcoal Core

This core should be used for wax removal on med & low temperature systems, and for clean-up of systems that have had a hermetic motor burnout. After clean-up this core should be replaced with RPE-48-BD Filter Element.

RPE-48-BD – Filter Element

This element should be used in the suction line to obtain the lowest possible pressure drop. In cleaning up a system after a hermetic motor burnout, cores should be used first. Then after the system is thoroughly clean, this filter element can be installed in the shell to offer continued compressor protection against solid particulates.

DEMOUNTABLE DRIER SHELLS

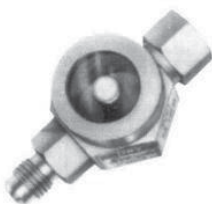
STOCK NO.	PRODUCT NUMBER	CONNECTION SIZE	NO OF CORES	PRICE \$ excl. GST
SD0000	BFDS-487	7/8" ODS	1 Core	230.00
SD0001	BFDS-489	1-1/8" ODS	1 Core	230.00
SD0002	BFDS-4811	1-3/8" ODS	1 Core	230.00
SD0003	BFDS-4813	1-5/8" ODS	1 Core	230.00
SD0004	BFDS-4817	2-1/8" ODS	1 Core	230.00
SD0005	BFDS-4825	2-5/8" ODS	1 Core	230.00
SD0007	BFDS-967	7/8" ODS	2 Core	290.00
SD0008	BFDS-969	1-1/8" ODS	2 Core	290.00
SD0009	BFDS-9613	1-3/8" ODS	2 Core	290.00
SD0010	BFDS-9613	1-5/8" ODS	2 Core	290.00
SD0011	BFDS-9617	2-1/8" ODS	2 Core	290.00
SD0032	-	2-5/8" ODS	2 Core	420.00
SD0015	BFDS-1449	1-1/8" ODS	3 Core	360.00
SD0016	BFDS-14411	1-3/8" ODS	3 Core	360.00
SD0017	BFDS-14413	1-5/8" ODS	3 Core	360.00
SD0018	-	2-1/8" ODS	3 Core	390.00
SD0020	BFDS-19211	1-3/8" ODS	4 Core	420.00
SD0021	BFDS-19213	1-5/8" ODS	4 Core	420.00
SD0022	BFDS-19217	2-1/8" ODS	4 Core	420.00



DRIER SHELLS MOUNTING BRACKET

STOCK NO.	PRODUCT NUMBER	DESCRIPTION	PRICE \$ excl. GST
SD0025	ACR3056	Bracket for mounting standard size drier shells	36.00

SEE-ALL LIQUID & MOISTURE INDICATOR



SPORLAN

ONE INDICATOR for REFRIGERANTS 134A, 22, 404A, 410A, and 507. The See-All Moisture and Liquid Indicator provides a true moisture indication for Refrigerants 134a, 22, 404A and 507. The See-All is also suitable for Refrigerants 410A, 401A & B, 402A & B and 409A. The dark green indicates dry and a bright yellow indicates wet. The one indicator avoids the confusion found in models with two elements. You cannot pick the wrong element when checking the moisture content of the system.

SPORLAN SIGHT GLASS - FLARE

STOCK NO.	PRODUCT NUMBER	SIZE	PRICE \$ excl. GST
SP2701	SA-12	1/4" MF	35.50
SP2707	SA-12FM	1/4" MF X FF	37.30
SP2703	SA-13	3/8" MF	37.90
SP2704	SA-13FM	3/8" MF X FF	39.40
SP2710	SA-14	1/2" MF	47.30
SP2711	SA-14FM	1/2" MF X FF	48.70
SP2706	SA-15	5/8" MF	49.00
SP2720	SA-15-U	5/8" MF X FF (Swivel)	57.50

SPORLAN SIGHT GLASS - SOLDER

STOCK NO.	PRODUCT NUMBER	SIZE	PRICE \$ excl. GST
SP2702	SA-12-S	1/4" ODS	37.30
SP2705	SA-13-S	3/8" ODS	39.40
SP2712	SA-14-S	1/2" ODS	49.40
SP2718	SA-15-S	5/8" ODS	50.20
SP2722	SA-17-S	7/8" ODS	72.80
SP2723	SA-19-S	1 1/8" ODS	80.50
SP2724	SA-211	1 3/8" ODS	158.00
SP2726	SA-213	1 5/8" ODS	182.00
SP2728	SA-217	2 1/8" ODS	246.00

STOCK NO.	PRODUCT NUMBER	DESCRIPTION	PRICE \$ excl. GST
SP2700	K-SA-4	Replacement Indicator	8.50



FEATURES

Reliable And Accurately Calibrated Colour Change Points.
The See-All Moisture and Liquid Indicator is accurately calibrated in parts per million of moisture for each refrigerant.

Colour Changes Are Easily Distinguished and Reversible.
The indicator's colour differs so widely between WET and DRY conditions that there is no possibility of confusion between the two. Colours will reverse as often as moisture concentration in the system changes.

Large Full View Sight Glass.

The See-All Moisture and Liquid Indicator has an extra large crystal clear sight glass for viewing the refrigerant. Bubbles can indicate a shortage of refrigerant or a restriction in the liquid line.

Indicator Protected from Discolouration and Dirt.

The indicator is protected by a filter pad and screen. This prevents washing of the indicator by the refrigerant and protects it from the system contamination and turbulence.

Replaceable Indicator Element.

The colour moisture indicator can be changed on the new fused glass models without the need to remove the See-All from the line. Simple replacement of the indicator is through the bottom. Request the K-SA-4 kit (SP2700)