

YELLOW JACKET SERIES-41 GAUGE MANIFOLDS



SERIES-41 Manifold Sets

Forged body is solid brass for durability. Full porting maximizes capacity. Metal valve handles are full size for easy operation. FlutterLess™ technology dampened movement helps minimize needle pulsation, combined with Easy-to-read **68mm steel case gauges** makes for easier, more accurate readings.



STOCK NO.	PRODUCT NUMBER	VALVES	SCALE	REFRIGERANTS	CONNECTIONS	PRICE \$ excl. GST
T5120	41382	2	BAR/PSI	134A/404A/407C	1/4"	157.50
T5120A	41642			134A/407C/22		157.50

YELLOW JACKET BRUTE GAUGE MANIFOLDS (80mm Gauges)



BRUTE II™ Manifold Sets (Include Gauge Boots)

Forged aluminium alloy body with full 3/8" bore for faster vacuum and charging. With full 3/8" bore all the way through the aluminum block, BRUTE II test/charging manifolds are engineered to dramatically increase flow over conventional four and two-valve designs. Easy-to-read, high accuracy 80mm steel case gauges makes for easier, more accurate readings. **(Accuracy to 1%)**



STOCK NO.	PRODUCT NUMBER	VALVES	SCALE	REFRIGERANTS	CONNECTIONS	PRICE \$ excl. GST
T5205	46190	4	BAR/PSI	134A/404A/407C	1/4" (3/8Vac)	385.00

YELLOW JACKET TITAN GAUGE MANIFOLDS (80mm Gauges)



Titan™ Manifold Sets

Lightweight, compact, fast and tough. The special aluminum alloy construction of the manifold body makes this unit lightweight for handling ease with the durability and reliability required for repeated, rugged use. Easy-to-read, high accuracy 80mm steel case gauges makes for easier, more accurate readings. **(Accuracy to 1%)**



STOCK NO.	PRODUCT NUMBER	VALVES	SCALE	REFRIGERANTS	CONNECTIONS	PRICE \$ excl. GST
T5198	49833	2	BAR/PSI	134A/404A/22	1/4"	280.00
T5199	49933	4			1/4" (3/8Vac)	343.00
T5200	49856	2		134A/404A/407C	1/4"	280.00
T5201	49956	4			1/4" (3/8Vac)	343.00
T5203	49870	2		410A	5/16"	315.00
T5204	49970	4			5/16" (3/8Vac)	375.00

Have greater confidence in your pressure measurements with Yellow Jackets 80mm certified Class-1 Manifold Gauges. Yellow Jacket gauges have always been manufactured and calibrated to NIST standards. The standard Ritchie Engineering procedure has been to measure for accuracy at five points: two times up the scale and then back down. The Ritchie Engineering certification process documents the NIST calibration plus compliance to ANSI Z540.1 and ISO 10012 standards.

EASY CONVERSION FROM BAR TO KPA
1BAR = 100KPA

CPS GAUGE MANIFOLDS (With Hoses)

STOCK NO.	PRODUCT NUMBER	VALVES	SCALE	REFRIG.	CONNECTIONS	PRICE \$ excl. GST
T6168	MBTP3	2	KPA/PSI	134A/404A/R22	1/4"	275.00
T6190	MCBJ3			410A	5/16"	295.00


CPS GAUGES & BOOTS - 68mm

STOCK NO.	PRODUCT NUMBER	DESCRIPTION	SCALE	REFRIGERANT	PRICE \$ excl. GST
T6160A	RGTH	68mm Pressure Gauge	KPA/PSI	134A/404A/R22	42.75
T6160	RGTL	68mm Compound Gauge			42.75
T6104	RGBH	68mm Pressure Gauge	KPA/PSI	410A	42.75
T6103	RGBL	68mm Compound Gauge			42.75
T6156	RGX68RB	68mm Pressure Gauge Boot - Red			15.00
T6155	RGX68BB	68mm Compound Gauge Boot - Blue			15.00


YELLOW JACKET GAUGES - 68mm

STOCK NO.	PRODUCT NUMBER	DESCRIPTION	SCALE	REFRIGERANT	PRICE \$ excl. GST
T5150	49063	68mm Pressure Gauge	BAR/PSI	134A/404A/407C	45.00
T5151	49064	68mm Compound Gauge			45.00
T5152	49031	68mm Pressure Gauge	BAR/PSI	134A/407C/22	45.00
T5153	49032	68mm Compound Gauge			45.00


YELLOW JACKET GAUGES - 80mm

STOCK NO.	PRODUCT NUMBER	DESCRIPTION	SCALE	REFRIGERANT	PRICE \$ excl. GST
T5158	49131	80mm Pressure Gauge	BAR/PSI	134A/404A/407C	58.00
T5159	49132	80mm Compound Gauge			58.00
T5160	46169	80mm Pressure Gauge	BAR/PSI	22/134A/404A	58.00
T5161	49170	80mm Compound Gauge			58.00
T5162	49135	80mm Pressure Gauge	BAR/PSI	410A	58.00
T5163	49136	80mm Compound Gauge			58.00


YELLOW JACKET GAUGE ACCESSORIES

STOCK NO.	PRODUCT NUMBER	DESCRIPTION	PRICE \$ excl. GST
T2200	49100	80mm Replacement Gauge Crystal	12.50
T2234	49090	68mm Gauge Boot Kit (Red & Blue)	35.00
T2281	49190	80mm Gauge Boot Kit (Red & Blue)	40.00



CHARGING HOSES - INDIVIDUAL

STOCK NO.	PRODUCT NUMBER	FITTINGS	LENGTH (Inches)	COLOUR	PRICE \$ excl. GST
T2240	21636	1/4" Female Flare	36	RED	35.00
T2242	21236			BLUE	35.00
T2244	21036			YELLOW	35.00
T2246	21660		RED	43.00	
T2248	21260		BLUE	43.00	
T2250	21060		YELLOW	43.00	
T2252	21672		RED	49.50	
T2254	21272		BLUE	49.50	
T2256	21072		YELLOW	49.50	
T2259	18160		3/8" FF	60	YELLOW



R410A HOSES (PLUS II™) - INDIVIDUAL

STOCK NO.	PRODUCT NUMBER	FITTINGS	LENGTH (Inches)	COLOUR	PRICE \$ excl. GST
T2232	21505	5/16"	60	YELLOW	50.00
T2233	21525			BLUE	50.00
T2233A	21565			RED	50.00
T2236	29005	5/16" with Isolating Ball Valve	60	YELLOW	87.50
T2236A	29205			BLUE	87.50
T2236B	29605			RED	87.50



- 1/4" & 5/16" PLUS II™ hoses are Made in the USA and are rated for 27500kpa minimum burst and 5500kpa maximum working pressure with an operating temperature of -28.8° to 82.2°C

CHARGING HOSE SETS

STOCK NO.	PRODUCT NUMBER	FITTINGS	LENGTH (Inches)	COLOUR	PRICE \$ excl. GST
T2245	21983	1/4" Female Flare	36	Red Yellow Blue	95.00
T2251	21985		60		120.00
T2257	21986		72		132.00
T2235	21585	5/16" FF	60		135.00

- 5/16" Hoses are suitable for R410A connections



CHARGING HOSE SETS - SEALRIGHT

STOCK NO.	PRODUCT NUMBER	FITTINGS	LENGTH (Inches)	COLOUR	PRICE \$ excl. GST
T2276	22983	1/4"	36	RYB	147.00
T2280	22986	1/4"	72	RYB	190.00

- SEALRIGHT™ - One end Immediately traps refrigerant in hose when hose is disconnected.

GASKETS TO SUIT ABOVE HOSES

STOCK NO.	PRODUCT NUMBER	DESCRIPTION	PRICE \$ excl. GST
T0072	19005	Gasket to suit 1/4" & 5/16" hose	0.80
T2601	19302	Valve Core Depressor (Pkt 10)	19.00
T2602	19011	Gasket to suit 3/8" hose (Pkt 10)	37.50



ACCESS PORT CORE REMOVER

STOCK NO.	PRODUCT NUMBER	DESCRIPTION	PRICE \$ excl. GST
T2290	18975	Vacuum/Charge Ball Valve - Core Remover 1/4"	133.00
T2290A	18985	Vacuum/Charge Ball Valve - Core Remover 5/16"	133.00
T2291	18974	Seal Kit for T2290 & T2290A Core Remover	29.50
T2292	18980	Accessory Kit for T2290. Allows for Schrader rethreading and broken Schrader removal.	87.50



Access port core removers allow you to remove and replace Schrader cores without losing charge. Extra 1/4" side port to attach electronic micron vacuum gauge right at system for greater accuracy or to add refrigerant, evacuate and charge through an unrestricted line for increased speed and higher vacuum. Core removal also allows recovery unit to work at maximum efficiency, speeding the recovery process.

YELLOW JACKET - QUICK COUPLERS

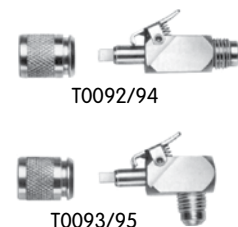
STOCK NO.	PRODUCT NUMBER	DESCRIPTION	PRICE \$ excl. GST
T0054	93827	Compact Ball Valve 5/16" FF x 5/16" MF	59.50
T0055	93825	Compact Ball Valve 5/16" FF x 1/4" MF	59.50
T0056	19109	Quick Connect 1/4" FF x 1/4" MF	35.00
T0058	19173	Quick Connect 5/16" FF x 1/4" MF	35.00
T0059	19175	Quick Connect 5/16" FF x 5/16" MF	35.00
T2279	19174	Quick Coupler 1/4" FF x 5/16" MF	35.00



- 5/16" Hoses are suitable for R410A connections.

IMPERIAL - QUICK COUPLERS

STOCK NO.	PRODUCT NUMBER	DESCRIPTION	PRICE \$ excl. GST
T0092	16C	Quick Coupler 1/4" FF x 1/4" MF - Straight	77.00
T0093	17C	Quick Coupler 1/4" FF x 1/4" MF - Angle	90.00
T0094	26C	Quick Coupler 5/16" FF x 5/16" MF - Straight	117.00
T0095	27C	Quick Coupler 5/16" FF x 5/16" MF - Angle	127.00



- 5/16" Hoses are suitable for R410A connections.

AUTOMOTIVE COUPLERS (R134A)

STOCK NO.	PRODUCT NUMBER	DESCRIPTION	PRICE \$ excl. GST
T6112	QCL14	Low Side Coupler	115.00
T6113	QCH14	High Side Coupler	115.00
T2299	41300	'O' Ring kit for above	9.60



YELLOW JACKET VACUUM PUMPS



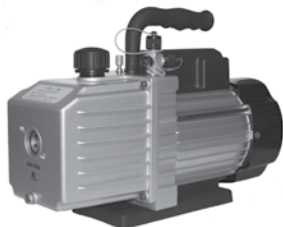
YELLOW JACKET VACUUM PUMP FEATURES:

- Heavy duty high torque motor assures easy starting
- Internal intake check valve prevents oil backup into the system during a power failure
- Large oil reservoir to help reduce operating temperature and better dilute corrosive contaminants
- Advanced engineering for quieter running
- Rugged metal construction – no plastic to crack or fall off
- Large oil drain valve and oil level sight glass

STOCK NO.	PRODUCT NUMBER	DESCRIPTION	PRICE \$ excl. GST
T5060	93623	2 stage Bullet Evac 70 Ltrs per minute	995.00
T5062	93625	2 stage Bullet Evac 120 Ltrs per minute	1,080.00
T5064	93620	2 stage Bullet Evac 165 Ltrs per minute	1,170.00

SPECIFICATIONS	93603	93605	93600
Free Air Displacement	70 L/M	120 L/M	160 L/M
Number of Stages	2 Stage Rotary Vane		
Ultimate Vacuum	25 Microns	25 Microns	25 Microns
Intake	1/4" MF, 3/8" MF, 3/8MF		
Motor	1/2 HP 1425 RPM	1/2 HP 1425 RPM	1/2 HP 1425 RPM
Oil Capacity	990ml	890ml	830ml
Dimensions	413L x 160W x 210H (mm)	413L x 160W x 210H (mm)	413L x 160W x 210H (mm)
Nett Weight	14.6 Kg	15.0 Kg	15.7 Kg

ENVIROTRONICS VACUUM PUMPS



ENVIROTRONICS VACUUM PUMP FEATURES:

- Four models to choose from (66 L/Min to 273 L/Min)
- All 2 stage Rotary vane construction
- Deep Ultimate Vacuum 15 Microns
- 3 Intake ports - 1/4"SAE & 3/8SAE plus 1/2" ACME
- Deep Alloy Motor cooling fins plus large fan
- Designed for HVAC & Automotive applications

STOCK NO.	PRODUCT NUMBER	DESCRIPTION	PRICE \$ excl. GST
T4052	EV66	Enviro-Vac 66 Ltrs per minute	660.00
T4053	EV132	Enviro-Vac 132 Ltrs per minute	785.00
T4054	EV176	Enviro-Vac 176 Ltrs per minute	1,035.00
T4055	EV273	Enviro-Vac 273 Ltrs per minute	1,495.00

SPECIFICATIONS	EV66	EV132	EV176	EV273
Free Air Displacement	66 L/M	132 L/M	176 L/M	273 L/M
Number of Stages	2 Stage Rotary Vane			
Ultimate Vacuum	15 Microns	15 Microns	15 Microns	15 Microns
Intake	1/4" MF, 3/8" MF, 1/2" ACME			
Motor	1/3 HP 1440 RPM	1/3 HP 2880 RPM	1/2 HP 2880 RPM	2/3 HP 2880 RPM
Oil Capacity	380ml	450ml	500ml	500ml
Dimensions	350L x 143W x 265H (mm)		380L x 160W x 285H (mm)	
Nett Weight	11.5 Kg	12 Kg	14 Kg	16.5 Kg

YELLOW JACKET RECLAIM UNITS



- Single valve control for easy changeover from liquid to vapour to purge
- Constant Pressure Regulator (CPR) valve regulates refrigerant to the compressor
- Advanced oil-less compressor with precision valves - ISO-9001 accredited
- Low Pressure cut-out, Single high pressure safety switch & circuit breaker
- Reusable mesh particulate filter inserts into suction port for protection
Simple cleaning eliminates replacement due to clogging
- High efficiency fan for cool running even in hot weather
- High strength HDPE case for lightweight and rugged use
- Designed and manufactured in the U.S.A.



STOCK NO.	PRODUCT NUMBER	DESCRIPTION	PRICE \$ excl. GST
T2386	95768	Yellow Jacket Refrigerant Recovery Unit XLT	2,495.00

SPECIFICATIONS	XLT	RECOVERY RATINGS (KG PER HOUR)	VAPOR	LIQUID	PUSH/PULL
Compressor	1/2hp Oil-less	R22	10	54	348
Refrigerants	All CFC / HCFC & HFC inc 410A	R134A	10	54	348
Dimensions (mm)	490L x 315W x 317H	R404A	18	72	351
Nett Weight	14.8 Kg	R410A	11	46	316

ENVIROTRONICS RECLAIM UNITS



- Single valve control for easy changeover from liquid to vapour to purge
- Advanced oil-less compressor with precision valves - ISO-9001 accredited
- Low Pressure cut-out, Single high pressure safety switch & circuit breaker
- Comes with standard size filter/drier for suction inlet
- High efficiency fan for cool running even in hot weather
- High strength HDPE case for lightweight and rugged use
- Single high pressure safety switch - external circuit breaker



STOCK NO.	PRODUCT NUMBER	DESCRIPTION	PRICE \$ excl. GST
T2490	VRR410	Envirotronics Refrigerant Recovery Unit VRR410	1,980.00
T2489	VRR24A	Envirotronics High Volume Recovery Unit VRR24A	3,100.00

SPECIFICATIONS	VRR410	RECOVERY RATINGS (KG PER HOUR)	VAPOR	LIQUID	PUSH/PULL
Compressor	1/2hp, 1 Cylinder, Oil-less	R22	15	108	334
Refrigerants	All CFC / HCFC & HFC inc 410A	R134A	14	94	278
Dimensions (mm)	500L x 220W x 340H	R404A	16	111	373
Nett Weight	16 Kg	R410A			

SPECIFICATIONS	VRR24A	RECOVERY RATINGS (KG PER HOUR)	VAPOR	LIQUID	PUSH/PULL
Compressor	1hp, 2Cylinder Oil-less	R22	30	108	502
Refrigerants	All CFC / HCFC & HFC inc 410A	R134A	27	188	448
Dimensions (mm)	495L x 230W x 340H	R404A	31	222	597
Nett Weight	17 Kg	R410A			

Recovery ratings based on UL* ARI 740-98 level field comparison method.
Other testing conditions can exhibit much higher rates

YELLOW JACKET LEAK DETECTORS

STOCK NO.	PRODUCT NUMBER	DESCRIPTION	PRICE \$ excl. GST
T2355	69368	Accuprobe™ Leak Detector with Heated Sensor for quick response	1,195.00
T2354	69339	Accuprobe™ UV Leak Detector - Electrolyte sensor & UV technology	1,195.00
T2356	69383	Accuprobe Replacement Head Kit	136.00
T2357	69385	Accuprobe Sensor Filters (Pkt 5)	13.50



FIELDPIECE LEAK DETECTORS

STOCK NO.	PRODUCT NUMBER	DESCRIPTION	PRICE \$ excl. GST
T4493	SRL8	Fieldpiece Heated Diode Leak Detector (Rechargeable)	860.00
T4195	SRL2K7	Fieldpiece Infrared Leak Detector - High sensitivity (Rechargeable)	1,308.00
T4495	RFT1	Wand Tip & Filter for SRL2 & SRL8	37.50



JAVAC LEAK DETECTORS

STOCK NO.	PRODUCT NUMBER	DESCRIPTION	PRICE \$ excl. GST
T2359	712-202-G21	Javac D-TEK - Infrared technology / High sensitivity (Rechargeable)	1,695.00
T2359A	705-202-G6	Javac TEK-Mate - Heated Diode portable leak detector	660.00
T2358A	712-701-G1	Sensor to suit D-TEK Infrared Leak Detector	421.00
T6167	703-020-G1	Sensor to suit TEK-Mate plus old Type D-TEK	188.00
T2359B	705-600-G1	Javac Filter Tip - Suits D-Tek & Tek Mate (pack of 20)	75.00



ENVIROTRONICS LEAK DETECTORS

STOCK NO.	PRODUCT NUMBER	DESCRIPTION	PRICE \$ excl. GST
T2475	EL520	Halogen Refrigerant Leak Detector	650.00



YELLOW JACKET VACUUM GAUGES

STOCK NO.	PRODUCT NUMBER	DESCRIPTION	PRICE \$ excl. GST
T2429	69086	Handheld Vacuum Gauge - 7 Different units of Vacuum	575.00
T2430	69075	SuperEvac Digital Vacuum Gauge - Rugged moulded enclosure	755.00
T2432	69073	Replacement Thermocouple Sensor for 69075	180.00
T2429A	69087	Replacement Thermocouple Sensor for 69086	108.00



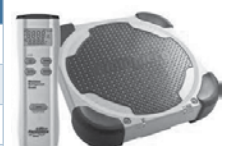
FEILDPIECE VACUUM GAUGES

STOCK NO.	PRODUCT NUMBER	DESCRIPTION	PRICE \$ excl. GST
T4199	SVG2	Rugged Handheld Vacuum Gauge with Alarms	485.00



CHARGING SCALES

STOCK NO.	PRODUCT NUMBER	DESCRIPTION	PRICE \$ excl. GST
T2370	68800	Yellow Jacket 50kg Capacity - Electronic Charging Scales	677.00
T2371	68810	Yellow Jacket 100kg Capacity - Electronic Charging Scales	955.00
T4204	SRS2C	Fieldpiece 100kg Cap Digital Wireless Charging Scales (10m Range)	895.00
T2491	DS-220R	Envirotronics 100kg Capacity Electronic Charging Scales	945.00



Fieldpiece SRS2C

DIGITAL THERMOMETERS

STOCK NO.	PRODUCT NUMBER	DESCRIPTION	RANGE (°C)	PRICE \$ excl. GST
T2360	69239	Yellow Jacket Digi-Alarm Thermometer	-50 to 200	85.00
T4193	SPK1	Fieldpiece Digital therm - Pocket Knife style	-50 to 200	84.00
T4200	SWT2	Fieldpiece Digital therm - Water Resistant Pocket	-50 to 200	73.00
G4004	Medi-Temp	HLP Cabinet Therm with Alarm (Magnetic mount)	-50 to 70	59.40



T2630

DIFFERENTIAL DIGITAL THERMOMETERS

STOCK NO.	PRODUCT NUMBER	DESCRIPTION	PRICE \$ excl. GST
T4198	ST4	Fieldpiece Dual-Temp Digital Thermometer	264.00
T0060	69207	Yellow Jacket Dual-Temp Digital Thermometer (Carry case)	380.00
T0061	69215	Air Probe to suit model - 69207	189.00
T0062	69216	Clamp on Probe to suit model - 69207	147.00
T0063	69218	General Probe to suit model - 69207	48.00
T0064	69220	Surface Probe to suit model - 69207	189.00
T0065	69224	Strap-on Probe to suit model - 69207	55.00



Fieldpiece ST4

INFARED THERMOMETERS

STOCK NO.	PRODUCT NUMBER	DESCRIPTION	RANGE (°C)	PRICE \$ excl. GST
T4185	SIG1	Fieldpiece Infrared with Laser - Gun Style (10:1 cone)	-30 to 550	271.00
T4188	SIR2	Fieldpiece Infrared with Laser - Pocket (6:1 cone)	-32 to 250	158.00
T4187	SIP2	Fieldpiece Infrared - Shirt Pocket (1:1 cone)	-30 to 110	86.00



Infrared thermometers take their measurement from a circle of a size determined by a simple ratio. For example if the specified cone ratio is 10:1 diameter and you are standing 10 meters from your target, the size of the circle you're taking the average temperature of will be 1 meter wide.



ELECTRICAL TEST METERS - FIELDPIECE

STOCK NO.	PRODUCT NUMBER	DESCRIPTION	PRICE \$ excl. GST
T4155	LT17A	Muti-Function Test Meter Kit - c/w Amp Head, K-type temperature - thermocouple, Rugged Rubber Holster & Canvas Carry case	429.00
T4175	SC45	Multi-Function Clamp Meter - Volts, Amps, Temperature	264.00
T4178	SC53	Dual Display Clamp Meter - Volts, Amps, Temperature	333.00
T4156	LT83A	Basic Muti-Function Electrical Test Meter	220.00
T4189	SMG5	Compact Megaohm Meter with case	372.00
T4190	SNCV1	Pocket Non-Contact Voltage Stick Tester	36.00



SC53

STAND ALONE SUPERHEAT/SUBCOOLING METER - FIELDPIECE

STOCK NO.	PRODUCT NUMBER	DESCRIPTION	PRICE \$ excl. GST
T4197	SSX34	Use for real-time measurement of Superheat and Subcooling c/w pressure port and clamp type thermocouple	780.00



SSX34



FIELDPIECE HS36 MULTIHEAD METER



The **Fieldpiece HS36** is a truly versatile testing tool with many optional head attachments which simply clip-on to quickly convert it into a number of many different test meters. As well as handling many tests the standard HS36 kit unit also comes complete with temperature thermocouples and a clip on clamp which can also be connected via cables for checking current draw in tight spots.

Standard Accessories

- ACH4 - 400AAC Current Clamp
- ADLS2 - Deluxe Silicone Test Leads
- ATB1 - Bead Type Standard Thermocouple
- AVS6 - Velcro Thermocouple Pipe Strap
- ANC1 - 4 Pocket Case

HS36 / EHD1 & OPTIONAL ATTACHMENTS

STOCK NO.	PRODUCT NUMBER	DESCRIPTION	PRICE \$ excl. GST
T4154	HS36	Fieldpiece HS36 True RMS Stick Meter Kit: For use with either modular heads or silicone lead Accessories	744.00
T4149	EHD1	Electronic Handle EHD1: Converts any Fieldpiece accessory head into a standalone meter	91.00
T4146	AVH1	Voltage Accessory Head for use with data logger DL3 & EHD1	78.00
T4144	AUA2	AC/DC Milli-Micro Amp Head (up to 200mA)	97.00
T4103	ACH4	AC Current Clamp Head (up to 400A)	122.00
T4102	ACDC6	AC/DC Current Clamp Accessory (up to 600amp)	319.00
T4139	ATH4	Dual Temperature Accessory Head c/w 2 x ATB1 temp sensors	235.00
T4124	ARH4	RH%, Temperature, Wet bulb & Dew Point Head	278.00
T4140	ATIR3	Infrared Temperature Accessory Head with laser pointer (8:1)	228.00
T4109	ADMN2	Dual Port Manometer Accessory Head	405.00
T4101	AAV3	Air Velocity And Temperature Accessory Head	435.00
T4145	AVG2	Vacuum Thermistor Accessory Head (50 to 2000 microns)	390.00
T4126	ASH3	Superheat test Accessory Head - R22 & R410A (Incl ATC1)	559.00
T4128	ASX14	Superheat/Subcooling test Head - R22 & R410A (Incl ATC1)	744.00
T4129	ASX24	Superheat/Subcooling test Head - R134A & R404A (Incl ATC1)	744.00
T4134	ATC1	K-Type Thermocouple Temperature Probe - Pipe Clamp Type	185.00
T4132	ATB1	K-Type Thermocouple Temperature Probe	38.00



EHD1



ACH4



AUA2



ACDC6



ATH4



ARH4



ATIR4



ASH3
ASX14
ASX24



ADMN2



AAV3



AVG2



ATC1

TEMPERATURE TECHNOLOGY



Temperature Technology



The **T-TEC** data loggers are the optimal choice due to the latest technology, unique robust design and powerful user friendly software. To start the logging and to download the results, the data loggers are simply connected to the PC via a USB interface cable. Get all the detailed information on your screen, which can be viewed, printed or saved. Up to 8 curves can be called up simultaneously on one graph.

DATA LOGGERS

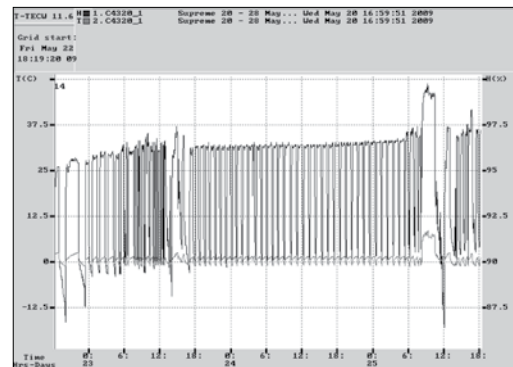
STOCK NO.	PRODUCT NUMBER	DESCRIPTION	RANGE (°C)	PRICE \$ excl. GST
U0225	T-TEC 6-1E	Temp Logger - Internal sensor	-40 to +85	357.00
U0226	T-TEC 6-3E	Temp Logger - External sensor (Not included)	-40 to +100	399.00
U0225D	T-TEC 7-1E	Temp Display Logger - Internal sensor	-40 to +85	462.00
U0226D	T-TEC 7-3E	Temp Display Logger - Ext sensor (Not included)	-40 to +100	504.00
U0224	T-TEC 6-1C	Temp/Humidity Logger - Internal sensors	-40 to +85	588.00
			0 to 100% RH	
U0224D	T-TEC 7-1C	Temp/Humidity Display Logger - Internal sensors	-40 to +85	693.00
			0 to 100% RH	



T-TEC 6

Features

- Australian made
- Watertight
- Extra sturdy
- Dust proof
- High accuracy
- Large memory
- 2 Audible or visual alarms with delay
- Powerful, easy to use software



T-TEC 7

LOGGER ACCESSORIES

STOCK NO.	PRODUCT NUMBER	DESCRIPTION	RANGE	PRICE \$ excl. GST
U0241	T-TEC-T1/1.5	Remote temperature sensor 1.5mtrs	-40 to +85	136.00
U0242	T-TEC-T1/3	Remote temperature sensor 3mtrs	-40 to +85	147.00
U0245	T-TEC-WB	Wall mounting bracket for loggers	-	27.00
U0230	T-TEC-SW	T-Tec software for windows	-	178.00
U0234	T-TEC-USB2	USB interface cable - Logger to PC	-	178.00



TECHNICAL SPECIFICATIONS

Casing:	Polycarbonate, Temp loggers watertight to IP68, Humidity loggers splash proof.		
Size:	65 x 30 x 105mm	Weight:	115g
Ambient:	-40deg.C to +85deg.C		
Battery:	1/2 AA, 3.6V		
Temp Sensor:	Precision thermistor or PT100	Humidity sensor:	Capacitive
Resolution:	Temp - 0.1deg.C	Humidity:	0.35% RH
Memory:	E-models 12,000 - 25,000 sets of measurements / C-models 10,600 sets of measurements		

YELLOW JACKET MAX-FLOW OIL PUMP



Features:

- Easily removes oil for recovery and conversion
- Add oil to existing systems - 78 ml per stroke
- Pumps against pressure 1380kpa (200psi)
- Universal stopper automatically adjusts to all standard container openings
- Use with alkyl-benzene, ester-based, polyolester, mineral and synthetic oils

SERVICE OIL PUMP

STOCK NO.	PRODUCT NUMBER	DESCRIPTION	PRICE \$ excl. GST
T2162	77940	Max-Flow Combination Service Oil Pump	335.00

TUBE CUTTERS - YELLOW JACKET

STOCK NO.	PRODUCT NUMBER	DESCRIPTION	SIZES (INCH)	PRICE \$ excl. GST
T2001	60160	Small Mini Cutter	1/4 to 5/8	34.00
T2000	60121	Mini Cutter	1/4 to 7/8	42.50
T2002	60142	Big Mini	1/4 to 1-1/8	88.00
T2004	60101	Premium Small Cutter	1/4 to 1-1/8	89.00
T2006	60102	Premium Large Cutter	1/4 to 1-5/8	110.00
T2008	60139	Adjustable Tube Cutter	3/8 to 2-5/8	211.00



TUBE CUTTERS - ROTHENBERGER

STOCK NO.	PRODUCT NUMBER	DESCRIPTION	SIZES (INCH)	PRICE \$ excl. GST
T6095	70401	No.1 MiniCut Tube Cutter	1/8 to 5/8	55.00
T6096	70402	No.2 MiniCut Tube Cutter	1/8 to 7/8	67.00
T6097	70015	Minimax Tube Cutter	1/8 to 1-1/8	108.00
T6108	70027	No.35 Heavy Duty Telescopic Tube Cutter	1/4 to 1-3/8	179.00
T6108A	70029A	No.42 Heavy Duty Telescopic Tube Cutter	1/4 to 1-5/8	215.00
T6109	70030	Large Ratchet Adjust Tube Cutter	1/8 to 2-5/8	330.00



TUBE CUTTER SPARES

STOCK NO.	PRODUCT NUMBER	DESCRIPTION	SUITS	PRICE \$ excl. GST
T2500	60120	Cutter Wheel for 60121, 60142	Yellow Jacket	18.00
T2502	60100	Cutter Wheel for 60101, 60102, 60103		20.00
T2504	60124	Cutter Wheel for 60123, 60139		34.00
T2516	60136	Wheel Screw for 60123 (New)		11.20
T2526	60079	Wheel Pin & Clip for 60101, 60102, 60103		11.20
T2528	60144	Wheel Pin & Clip for 60142		7.50
T2088	60165	Deburring Tool for 60139 Tube Cutter		26.00
T6098	70003	Cutter wheel for mini cutter T6095, 96	Rothenberger	38.60
T6110	70017	Cutter wheel to suit 70015, 27, 29E, 30	Rothenberger	51.00



TUBE DEBURRING TOOLS - YELLOW JACKET

STOCK NO.	PRODUCT NUMBER	DESCRIPTION	PRICE \$ excl. GST
T2089	60166	Yellow Jacket Economy Deburring Tool	25.50
T2090	60163	Yellow Jacket Deburring Tool	73.00
T2548	60164	Replacement Blade for 60163 & 60166	25.50
T2092	60161	Tube Reamer/Deburring Tool - Inner & Outer	47.00



TUBE DEBURRING TOOLS - ROTHENBERGER

STOCK NO.	PRODUCT NUMBER	DESCRIPTION	PRICE \$ excl. GST
T2091	21660	Unigrat Pocket Deburring Tool	37.50
T6117	21655	Graffix HSS Deburring Tool	69.00
T2091A	21652	Replacement Blade for 21660 & 21655	22.00
T2093	11006	Tube Reamer/Deburring Tool - Inner & Outer	66.00



FLARING TOOLS - ROTHENBERGER / RIDGID

STOCK NO.	PRODUCT NUMBER	DESCRIPTION	SIZES (INCH)	PRICE \$ excl. GST
T6013R	R222402	Rothenberger Eccentric Cone Flaring Tool - 410A (Complete with carry case)	1/4 to 3/4	597.00
T6144	FT456R/70677	Ridgid Eccentric Cone Flaring Tool - 410A	1/4 to 3/4	576.00



T6013R

FLARING AND SWAGING TOOLS - YELLOW JACKET

STOCK NO.	PRODUCT NUMBER	DESCRIPTION	SIZES (INCH)	PRICE \$ excl. GST
T2020	60440	Flare/Swage Kit	3/16 to 3/4	356.00
T2024	60270	Flare/Burnish Kit	3/16 to 5/8	162.00
T2028	60295	Eccentric Cone Flaring Tool - R410A	3/16 to 3/4	305.00
T2025	60278	Flaring Tool Deluxe	1/8 to 3/4	365.00



T2024



T2025

FLARING AND SWAGING TOOLS - SHINE YEAR

STOCK NO.	PRODUCT NUMBER	DESCRIPTION	SIZES (INCH)	PRICE \$ excl. GST
T6008	CH-525	Flare & Burnish Tool	3/16 to 5/8	72.00
T6009	CH-278L	Flare & Swage Tool in case	1/8 to 3/4	148.00
T6010	CH-275L	Flare & Swage Kit in carry case	1/8 to 3/4	108.00
T6012	CH-808A	Flaring Tool Eccentric Cone	3/16 to 3/4	195.00
T6013	CH-806A	Flare Eccentric Cone - R410A	1/4 to 3/4	220.00



T6010



T6013

PUNCH TYPE SWAGING TOOLS

STOCK NO.	PRODUCT NUMBER	DESCRIPTION	SIZES (INCH)	PRICE \$ excl. GST
T0156	60475	Set - 4 pieces in pouch	1/4 to 5/8	75.00
T2030	60460	Multi Swage Punch (Stepped)	3/16 to 5/8	35.00



EXPANDER SET - ROTHENBERGER

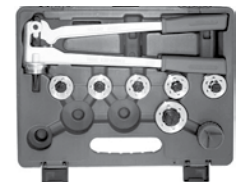
STOCK NO.	PRODUCT NUMBER	DESCRIPTION	PRICE \$ excl. GST
T6175	012321	Rothenberger - Lever Type Expander Set Expander Heads Included - 1/2" to 7/8"	735.00
T6185	11052	Expander Head 3/8"	168.00
T6185A	11053	Expander Head 1/2"	168.00
T6185B	11054	Expander Head 5/8"	168.00
T6185C	11055	Expander Head 3/4"	168.00
T6185D	11056	Expander Head 7/8"	168.00
T6186	11057	Expander Head 1"	168.00
T6186A	11058	Expander Head 1-1/8"	198.00
T6186B	11035	Expander Head 1-3/8"	260.00
T6186C	11062	Expander Head 1-5/8"	260.00



EXPANDER SET - YELLOW JACKET

STOCK NO.	PRODUCT NUMBER	DESCRIPTION	PRICE \$ excl. GST
T0066	60407	Yellow Jacket - Lever Type Expander Set Expander Heads Included - 3/8" to 1-1/8"	795.00

■ Rothenberger & Shine Year Expander heads also suit Yellow Jacket Expander



EXPANDER SET - SHINE YEAR

STOCK NO.	PRODUCT NUMBER	DESCRIPTION	PRICE \$ excl. GST
T6202	CH-1000	Shine Year - Lever Type Expander Set Expander Heads Included - 3/8" to 1"	540.00
T6205	CH-1000E-3/8	Expander Head 3/8"	95.00
T6208	CH-1000E-1/2	Expander Head 1/2"	95.00
T6211	CH-1000E-5/8	Expander Head 5/8"	95.00
T6214	CH-1000E-3/4	Expander Head 3/4"	95.00
T6217	CH-1000E-7/8	Expander Head 7/8"	95.00
T6219	CH-1000E-1	Expander Head 1"	95.00
T6222	CH-1000E-118	Expander Head 1-1/8"	135.00
T6226	CH-1000E-138	Expander Head 1-3/8"	175.00
T6228	CH-1000E-158	Expander Head 1-5/8"	175.00



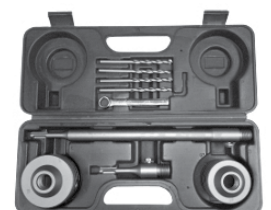
HYDRAULIC EXPANDER SET - ENVIROTRONICS

STOCK NO.	PRODUCT NUMBER	DESCRIPTION	PRICE \$ excl. GST
T2492	CT300A	Hydraulic Expander Set plus Tube Cutter Expander Heads Included - 3/8" to 1-1/8"	790.00



CONCRETE CORE CUTTER SETS

STOCK NO.	DESCRIPTION	PRICE \$ excl. GST
T6500	Concrete Core Cutter Set in Carry Case Includes - 4 Pilot Drills, 65 & 85mm Cutters, Short & Long Extensions	295.00
T6502	Diamond Core Cutter Set in Carry Case Includes - 4 Pilot Drills, 65 & 80mm Cutters, Short & Long Extensions	580.00



TUBE BENDERS - SHINE YEAR

STOCK NO.	PRODUCT NUMBER	DESCRIPTION	PRICE \$ excl. GST
T6001	CH-364-04	Lever Type Tube Bender 1/4"	75.00
T6002	CH-364-06	Lever Type Tube Bender 3/8"	110.00
T6003	CH-364-08	Lever Type Tube Bender 1/2"	125.00
T6004	CH-364-10	Lever Type Tube Bender 5/8"	220.00
T6005	CH-364-12	Lever Type Tube Bender 3/4"	250.00
T6005A	CH-364-14	Lever Type Tube Bender 7/8"	325.00
T6006	CH-368	Tube Bender 3-in-1 90° bend - 1/4, 5/16, 3/8	45.00
T6007	CH-367	Tube Bender 3-in-1 180° bend - 1/4, 5/16, 3/8	55.00



TUBE BENDERS - MULTI-HEAD RATCHET

STOCK NO.	PRODUCT NUMBER	DESCRIPTION	PRICE \$ excl. GST
T2071	60331	Yellow Jacket Multi-Head Ratchet Benders - 3/8 to 7/8	490.00
T6011	CH-404L	Shine-Year Multi-Head Ratchet Benders - 3/8 to 7/8	295.00



BENDING SPRINGS

STOCK NO.	PRODUCT NUMBER	DESCRIPTION	PRICE \$ excl. GST
T0001	60354	1/4" Bending Springs	12.00
T0002	60356	3/8" Bending Springs	13.00
T0003	60358	1/2" Bending Springs	15.00
T0004	60359	5/8" Bending Springs	15.00
T0005	60360	3/4" Bending Springs	18.00



TORQUE WRENCHES - 410A

STOCK NO.	PRODUCT NUMBER	DESCRIPTION	PRICE \$ excl. GST
T0221	R175001	Rothenberger Torque Wrench Set with Canvas Case	295.00
T6197B	ATQ541	CPS Torque Wrench Set with Solid Case	265.00
T6194	BTQ180	CPS Torque Wrench 17mm	150.00
T6195	BTQ420	CPS Torque Wrench 22mm	150.00
T6196	BTQ550	CPS Torque Wrench 26mm	243.00
T6197	BTQ650	CPS Torque Wrench 29mm	256.00



RATCHET WRENCHES - YELLOW JACK

STOCK NO.	PRODUCT NUMBER	TYPE	SIZES	PRICE \$ excl. GST
T2045	60613	Straight 4 Way - Standard	Square 3/16", 1/4", 3/8", 5/16"	34.00
T2046	60618	Straight 4 Way - Heavy Duty	Square 3/16", 1/4", 3/8", 5/16"	56.00
T2048	60616	Offset 4 Way	Square 1/4", 3/16", 3/8", 5/16"	36.00
T2044	60612	Straight 4 Way - Heavy Duty	Square 3/16 & 1/4" Hex 1/2" & 5/16"	56.00
T2052	60610	Straight 4 Way with Hex Key	Square 1/4", 3/16", 3/8", 5/16"	52.00
T2053	60609	Hex Key works for 3/16" & 5/16" Hex Valves		25.00



FIN COMBS

STOCK NO.	PRODUCT NUMBER	DESCRIPTION	PRICE \$ excl. GST
T0911	61158	Yellow Jacket Fin Comb Set (Set of 6)	36.00
T5042	MA-MFC3	MA-Line 6-Sided Fin Comb (6 sizes)	45.00



INSPECTION MIRRORS

STOCK NO.	PRODUCT NUMBER	DESCRIPTION	PRICE \$ excl. GST
T5025	MA-143A	MA-Line Inspection Mirror 1-1/4" Round	28.00
T5025A	MA-157A	MA-Line Inspection Mirror 1" Oval	28.00
N6017	540855	Rothenberger Magnetic Welding Mirror	104.00



ALLEN KEY (HEX KEY) SETS

STOCK NO.	PRODUCT NUMBER	DESCRIPTION	PRICE \$ excl. GST
T2098	60685	12Piece Hex Key Set - Ball End c/w Holder Set of: 1/16", 5/64", 3/32", 7/64", 1/8", 9/64", 5/32", 3/16", 7/32", 1/4", 5/16"	80.00
T2099	60750	Hex Key Set , 7 piece 12" long Set of: 5/64", 3/32", 1/8", 5/32", 3/16", 7/32", 1/4"	57.00



MISCELLANEOUS HAND TOOLS

STOCK NO.	DESCRIPTION	PRICE \$ excl. GST
T0335	6" Adjustable Shifter Spanner	17.00
T0336	8" Adjustable Shifter Spanner	22.00
T0337	10" Adjustable Shifter Spanner	28.00
T0338	12" Adjustable Shifter Spanner	38.00
T0340	6" Side Cutters	18.00
T0339	8" Heavy Duty Pliers with cable cutter	25.00
T0341	7 Piece Screwdriver Set in Carry Case	54.00
T0053	180 mm Pinch Off Tool Pliers	42.00
T5028	Capillary Tube Cutter	23.00
C4231	PVC Pipe Cutter	75.00
T5049	Steel Calipers	15.00
T0106	Rechargeable Led Working Light	110.00



MISCELLANEOUS TEST EQUIPMENT

STOCK NO.	DESCRIPTION	PRICE \$ excl. GST
T5043	Pocket Probe Dial Thermometer 5"	11.50
T5046	MA-Line Combo Circuit Tester/Screwdriver 90-250v AC/DC with Pocket Clip.	9.50
T5089	MA-Line Non Contact Pocket Volt Tester 24V - 1000V with Flashlight	60.00



SLING PSYCHROMETERS

STOCK NO.	PRODUCT NUMBER	DESCRIPTION	PRICE \$ excl. GST
T0067	69008	Digital Sling Psychrometer	287.00
U0065	Zeal Sling	Zeal Psychrometer	490.00
U0064	Zeal Refill	Refill Zeal Sling Psychrometer	129.00



ROTHENBERGER SUPER FIRE-2



Concentrated high heat, anti-flare, adjustable flame with powerful turbine flame pattern. Equipped with instant piezo ignition, the Super Fire 2 is fast and effective for all soldering and brazing applications and can be operated with either the disposable Propane or Map gas cylinders. Burns at up to **2000°C**

STOCK NO.	PRODUCT NUMBER	DESCRIPTION	PRICE \$ excl. GST
N6009	35644	Super-fire-2 Brazing Torch	375.00



ROTHENBERGER SUPER FIRE-3



The next generation in portable brazing torch, the Super Fire 3 is the most complete torch available. Equal or better performance than the SF2, with wider range of options. Features include piezo ignition, 'Twist 'n' Load' rapid exchange burners, metal construction & precision flame adjustment. Complete with cylinder collar, Cyclone & Fine-Flame Burners & cylinder safety stand. Burns at up to **2400°C**

STOCK NO.	PRODUCT NUMBER	DESCRIPTION	PRICE \$ excl. GST
N6011	35430	Super-fire-3 Brazing Torch	450.00
N6014	35490U	Super-fire-3 Hot Box - Includes a Super Fire 3 Torch with Cyclone Burn Tube, Pin Point Burn Tube, Heat Guard, Map Gas Safety Stand and two cylinders of Map Gas,	595.00



TESUCO TURBOSET-200



The Turbo Set 200 is a compact and light weight gas brazing set, specifically designed for use with self-contained disposable gas cylinders, making it ideal for use within the air conditioning, plumbing and refrigeration industries. Weighing in at only 5kg (including cylinders), the unit is extremely versatile and suitable for use in hard to reach areas. As the gas cylinders are bought outright, there are no ongoing cylinder rental payments. Burns at up to **3100°C**

STOCK NO.	PRODUCT NUMBER	DESCRIPTION	PRICE \$ excl. GST
N6030	OTS200	TurboSet 200 c/w - Metal carry stand, Brazing Tips, Press regulators for Oxygen & MAP//Pro, 2m of separated hose, lighter, Multipurpose spanner & Protective welding goggles	690.00



BRAZING TORCH & ACCESSORIES

STOCK NO.	PRODUCT NUMBER	DESCRIPTION	PRICE \$ excl. GST
N6020	TS800-BT	Surefire Brazing Torch TS8000 - 2000 °C	248.00
N6050	35663	Mapp Gas Cylinder - Suits Surefire, Superfire & TurboSet	42.00
N6032	Oxygen	Oxygen Cylinder for TurboSet 200	89.00
N6035	OTS200RO	Oxygen Regulator for TurboSet 200	125.00
N6036	OTS-200RM	Mapp Gass Regulator for TurboSet 200	135.00
N6035A	OTS-ORO	O-Ring for Oxy TurboSet Regulator	2.80
T6177	31042	Flame Guard to suit Superfire-2	135.00
T0103	580500	Spark-Key Torch Ignitor	45.50
N6017	540855	Magnetic Welding Mirror	99.50
N6012	67022	Soldering Mat	73.50



SILVER BRAZING ALLOY

STOCK NO.	TYPE	COLOUR CODE	Diameter x Length (mm)	SOLD	PRICE \$ excl. GST
N0525	2% SBA	Yellow	2.5 x 750	Per Kg	115.00
N0525A	2% SBA		2.5 x 750	Per Stick	3.00
N1520	5% SBA	Silver	2.5 x 750	Per Kg	205.00
N1520A	5% SBA		2.5 x 750	Per Stick	5.00
N1525	15% SBA	Brown	2.5 x 750	Per Kg	490.00
N1525A	15% SBA		2.5 x 750	Per Stick	15.00
N1530	15% SBA		3.0 x 750	Per Kg	490.00
N1530A	15% SBA		3.0 x 750	Per Stick	17.00
N5015	45% SBA	Blue	1.5 x 750	Per Kg	2,170.00
N5015A	45% SBA		1.5 x 750	Per Stick	27.00
N5020	General Purpose Flux for Silver Brazing Alloy			150g Pot	18.00



- Due to the fluctuating alloy costs, brazing rod prices should be used as a guide only.

Brazing Alloy Guide

2% Silver (Yellow Tip)

- Suitable for copper to copper and copper alloys.
- Use flux for copper to copper and copper alloys.

15% Silver (Brown Tip)

- Suitable for copper to copper and copper alloys
- Provides excellent ductility for high stressed joints.
- No flux required for copper to copper.
- Use flux for copper alloys.

5% Silver (Yellow Tip)

- Suitable for copper to copper and copper alloys.
- Use flux for copper to copper and copper alloys.

45% Silver (Blue Tip)

- Suitable for copper to copper and copper alloys.
- Provides high strength with excellent capillary action.
- Good ability to fill fine gaps.
- No flux required for copper to copper.
- Use flux for copper alloys.

Notes On Brazing

Pre-Cleaning the Joint Area

- Surface oxides must be removed for sound joining of metals and best used in conjunction with one of the following two cleaning methods:
 1. **Mechanical** - Joint areas should be thoroughly rubbed with abrasive material such as plumber's sandpaper, steel wool or emery cloth.

NOTE: When cleaning tubing, always turn tubing downwards when rubbing so that any excess material is not introduced into the pipe system while cleaning.
 2. **Chemical** - In refrigeration applications Mechanical cleaning is normally sufficient, but if necessary to swab the interior surface a solvent should be used. AVOID: Carbon Tetrachloride's or solvents that contain Chlorinates.

Post-Cleaning

- Most fluxes allow a quick, permanent and complete post-cleaning solution. Remove excess flux residue with damp cloth.
- **NOTE:** In refrigeration repairs and applications, remove flux residue prior to pressurising system.

Purpose of Flux

- To remove the surface of excess films and oxides during the soldering (brazing) process.
- Helps prevent oxides from forming.
- To promote fluid flow and increase adhesion of the filler metal.
- Each type of flux is formulated for a specific application.
- In refrigeration applications, flux is required to be applied without interfering with the system function.

